



Concealed Closer - ITS.11204 Fitting Instruction

TEL: +44 (0) 1246 261 491 | www.rutlanduk.co.uk

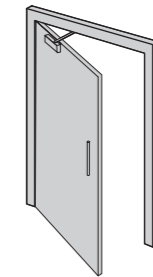


Operations and Maintenance Manual



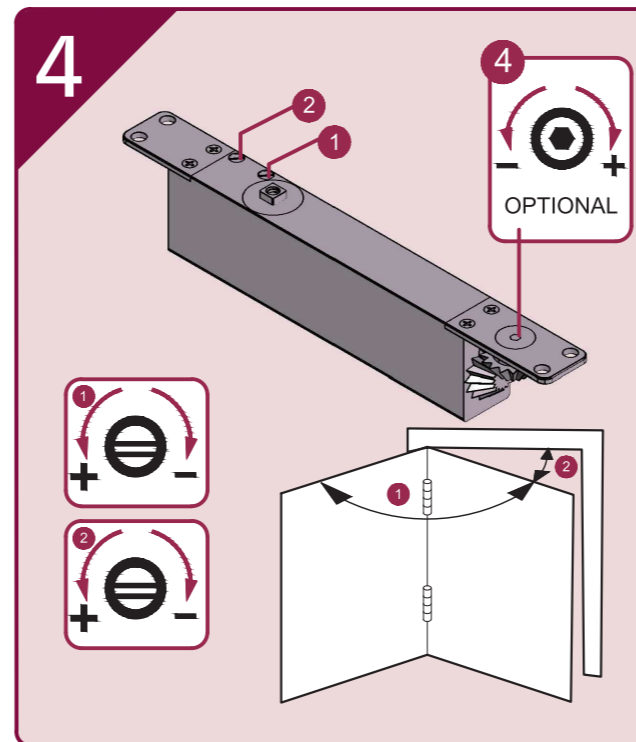
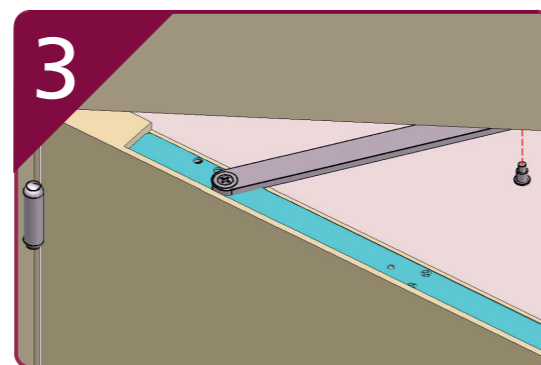
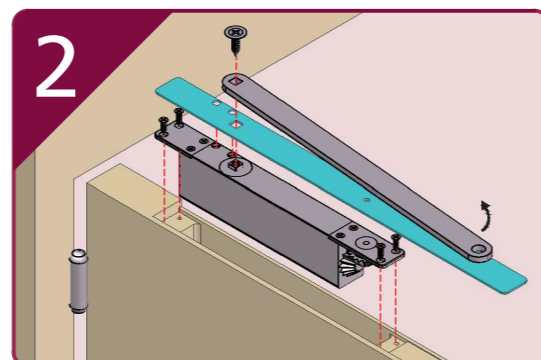
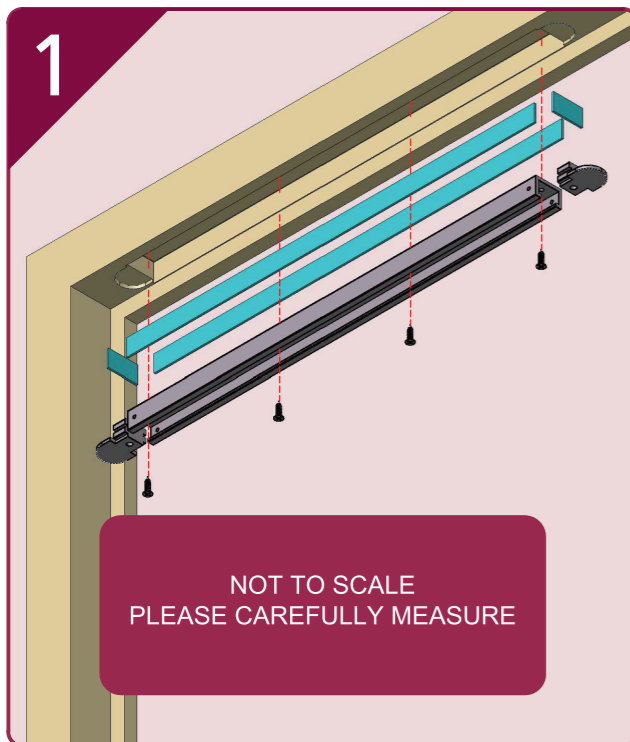
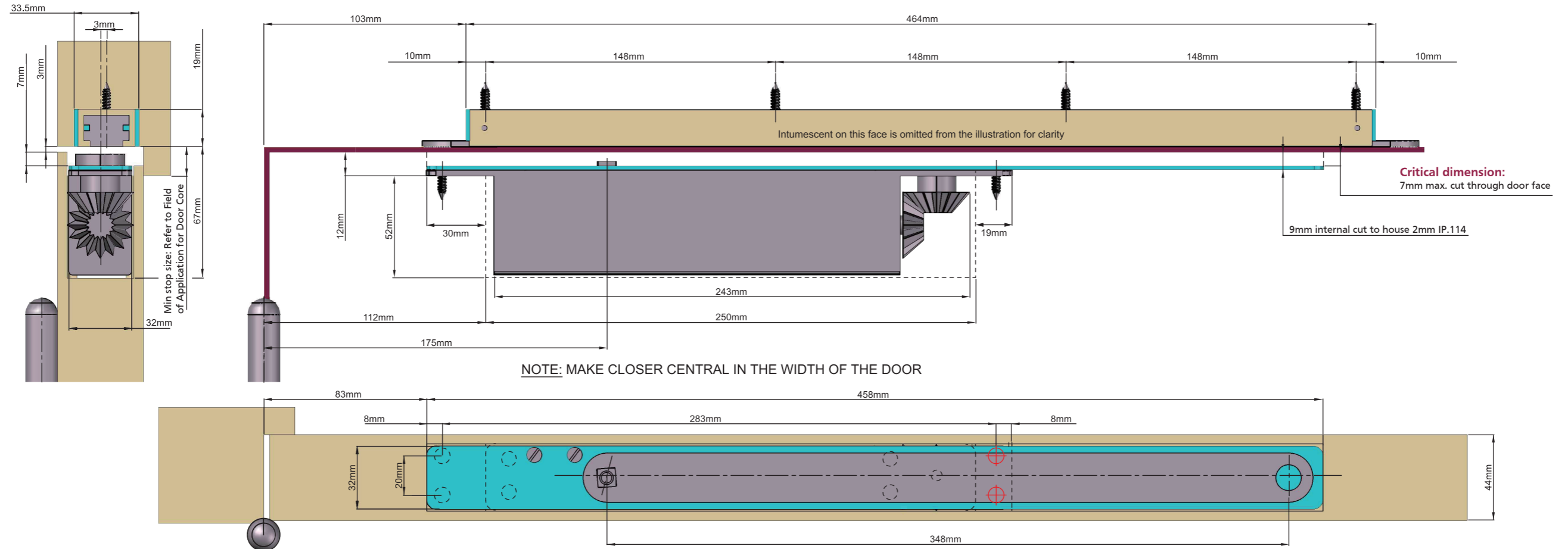
BS EN 1154

3 8 2 4 1 1 3



Fire Doors

Use in conjunction with the IP.114 Intumescent kit + Fitting Instruction



Size 2-4 Power Adjustment

No. of turns	Size	Max. door width	Max. opening angle	Max weight
-4	2"	850mm	110°	45
*0	3	950mm	110°	60
+6	4	1100mm	110°	130

*FACTORY PRE-SET
■ - 18Nm MINIMUM CLOSING FORCE PERMITTED ON FIRE DOORS

IMPORTANT NOTES:
THE PINION BOLT MUST BE TIGHTENED TO 12Nm.

DOOR CLOSERS ARE NOT INTENDED TO OVERCOME EXCESSIVE AIR PRESSURES OR POORLY DESIGNED SMOKE SEALING

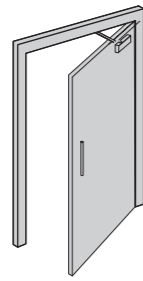
A MECHANICAL DOOR CLOSER IS NOT DESIGNED TO OVERCOME POOR FITTING, EXCESSIVE AIR PRESSURES OR BINDING SMOKE AND WEATHER SEALS. EXCESSIVE AIR PRESSURES CAN BE CREATED BY THROUGH DRAFT, BY AIR CONDITIONING, BY SMALL ROOMS WITHOUT VENTILATION, OR WHERE NO AIR TRANSFERS GRILLS ARE FITTED. MECHANICAL DOOR CLOSERS ARE DESIGNED TO CLOSE THE STATED AND TESTED SPECIFICATION OF DOOR WEIGHT AND DOORSETS/DOOR ASSEMBLIES WHEN DOORS ARE FITTED WITH CORRECT GAPS AND NOT BINDING ON SEALS. IF YOU ENCOUNTER PROBLEMS WITH DOORS NOT CLOSING PLEASE WATCH OUR "6 WAYS TO TROUBLESHOOT A DOOR CLOSER" VIDEO ONLINE. WHERE DOORS ARE NOT CLOSING DUE TO AIR PRESSURES THEN PROFESSIONAL ADVICE FROM AN AUTHORISED INSTALLER IS RECOMMENDED TO FIT TESTED AND THIRD PARTY CERTIFIED AIR TRANSFER GRILLS AND/OR AUTOMATIC DOOR OPERATORS.
NOTE: BC VALVES ARE DESIGNED TO ASSIST BACK-CHECK AND DO NOT REPLACE THE REQUIREMENT FOR CORRECTLY FITTED DOORSTOPS OR SAFETY BARRIERS.

FURTHER WARRANTY INFORMATION: <https://www.rutlanduk.co.uk/rutland-warranty>

THE PINION BOLT MUST BE TIGHTENED TO 12NM
FIRE DOORS MUST BE FITTED WITH INTUMESCENT GASKETS

Fire Doors

Use in conjunction with the IP.114 Intumescent kit + Fitting Instruction

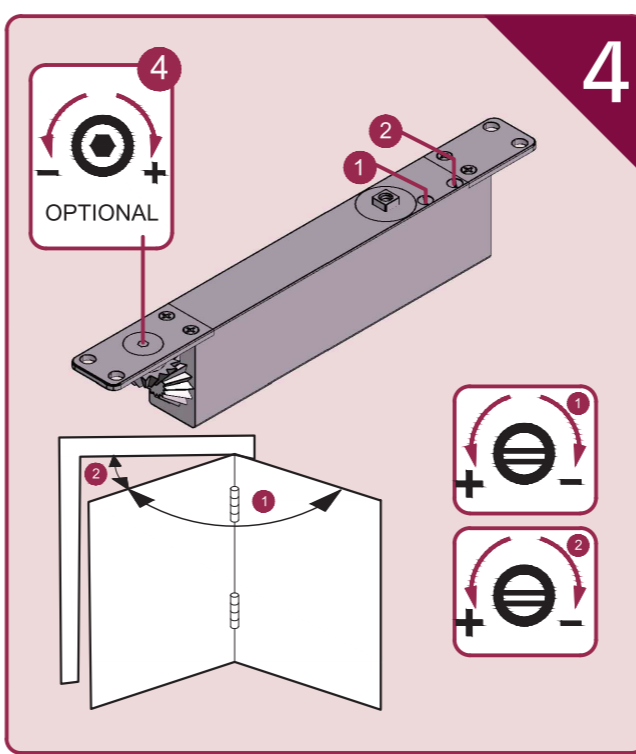
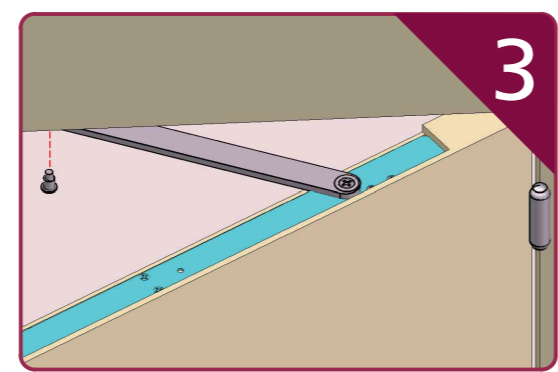
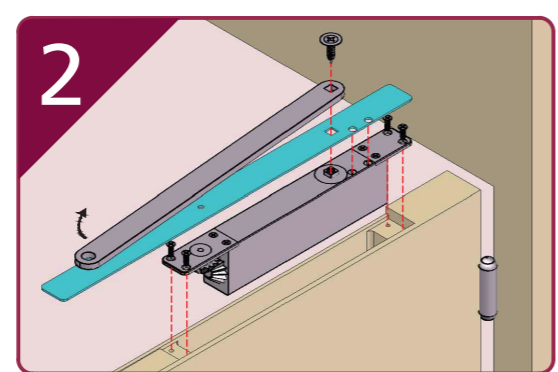
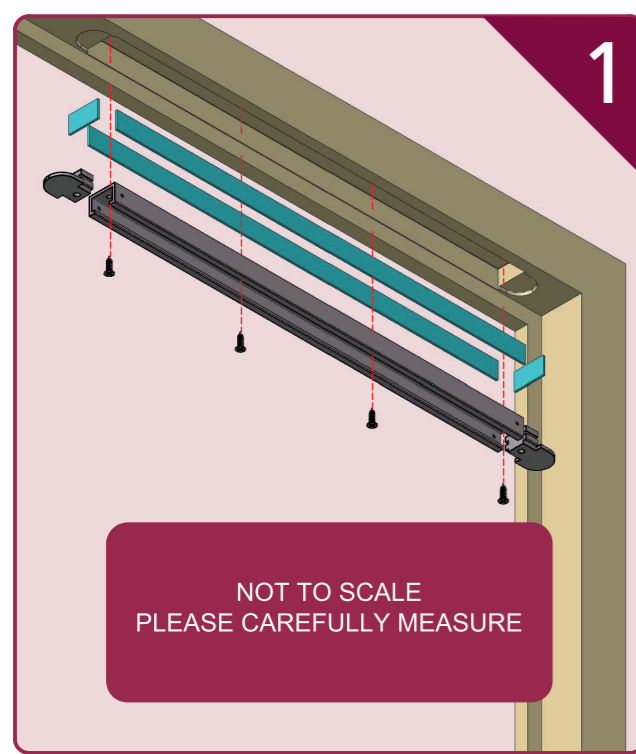
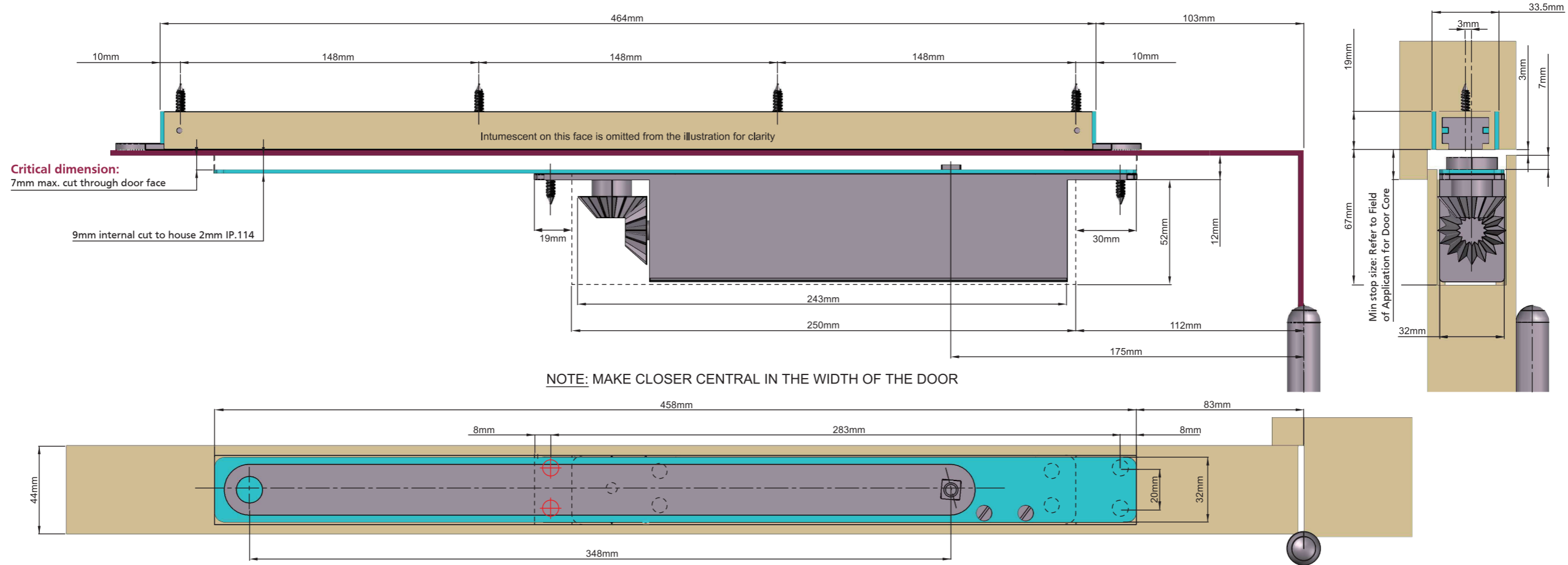
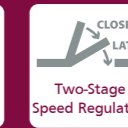


Concealed Closer - ITS.11204 Fitting Instruction

TEL: +44 (0) 1246 261 491 | www.rutlanduk.co.uk



Operations and Maintenance Manual



Size 2-4 Power Adjustment

No. of turns	Size	Max. door width	Max. opening angle	Max weight
-4	2"	850mm	110°	45
*0	3	950mm	110°	60
+6	4	1100mm	110°	130

*FACTORY PRE-SET
■ - 18Nm MINIMUM CLOSING FORCE PERMITTED ON FIRE DOORS

IMPORTANT NOTES:
THE PINION BOLT MUST BE TIGHTENED TO 12Nm.

DOOR CLOSERS ARE NOT INTENDED TO OVERCOME EXCESSIVE AIR PRESSURES OR POORLY DESIGNED SMOKE SEALING

A MECHANICAL DOOR CLOSER IS NOT DESIGNED TO OVERCOME POOR FITTING, EXCESSIVE AIR PRESSURES OR BINDING SMOKE AND WEATHER SEALS. EXCESSIVE AIR PRESSURES CAN BE CREATED BY THROUGH DRAFT, BY AIR CONDITIONING, BY SMALL ROOMS WITHOUT VENTILATION, OR WHERE NO AIR TRANSFER GRILLS ARE FITTED. MECHANICAL DOOR CLOSERS ARE DESIGNED TO CLOSE THE STATED AND TESTED SPECIFICATION OF DOOR WEIGHT AND DOORSETS/DOOR ASSEMBLIES WHEN DOORS ARE FITTED WITH CORRECT GAPS AND NOT BINDING ON SEALS. IF YOU ENCOUNTER PROBLEMS WITH DOORS NOT CLOSING PLEASE WATCH OUR "6 WAYS TO TROUBLESHOOT A DOOR CLOSER" VIDEO ONLINE. WHERE DOORS ARE NOT CLOSING DUE TO AIR PRESSURES THEN PROFESSIONAL ADVICE FROM AN AUTHORISED INSTALLER IS RECOMMENDED TO FIT TESTED AND THIRD PARTY CERTIFIED AIR TRANSFER GRILLS AND/OR AUTOMATIC DOOR OPERATORS.

NOTE: BC VALVES ARE DESIGNED TO ASSIST BACK-CHECK AND DO NOT REPLACE THE REQUIREMENT FOR CORRECTLY FITTED DOORSTOPS OR SAFETY BARRIERS.

FURTHER WARRANTY INFORMATION: <https://www.rutlanduk.co.uk/rutland-warranty>

THE PINION BOLT MUST BE TIGHTENED TO 12NM
FIRE DOORS MUST BE FITTED WITH INTUMESCENT GASKETS