

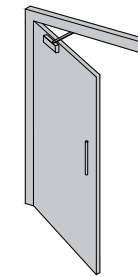


Concealed Closer Single Action ITS11204 With Micro Rail



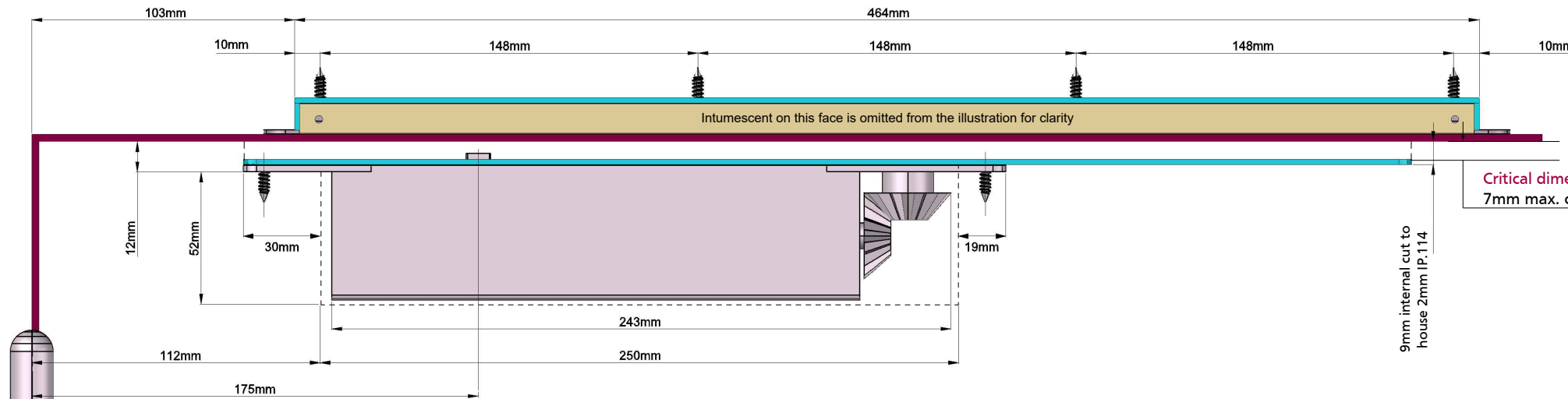
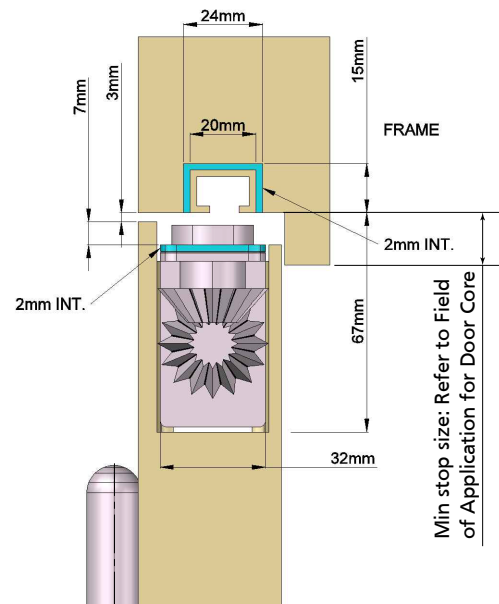
060619

01246 261 491 www.rutlanduk.co.uk

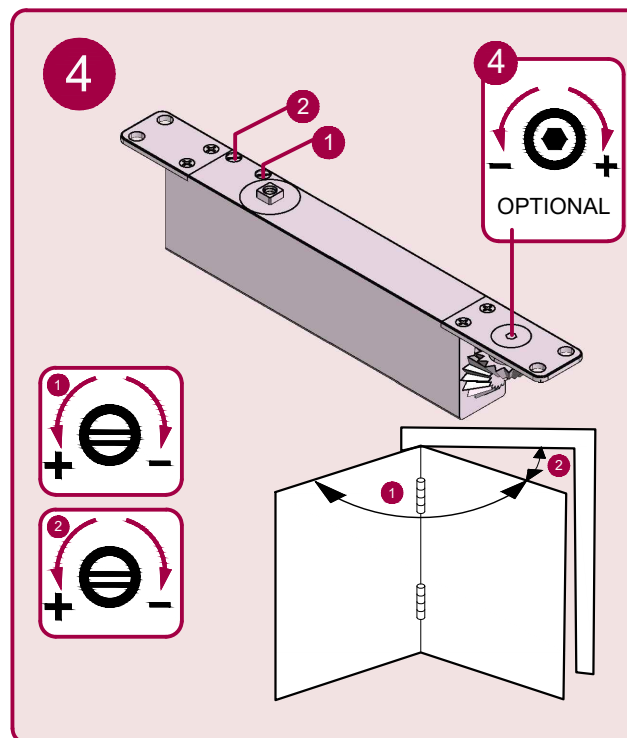
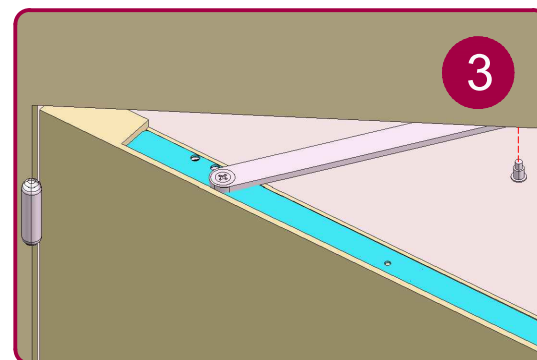
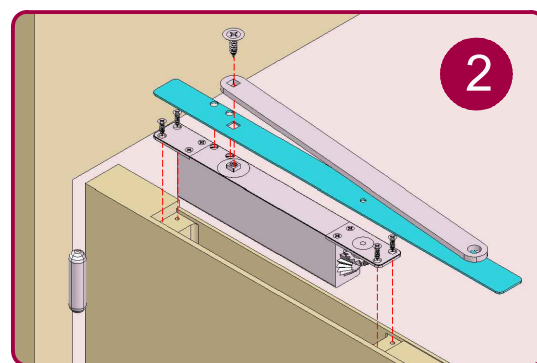
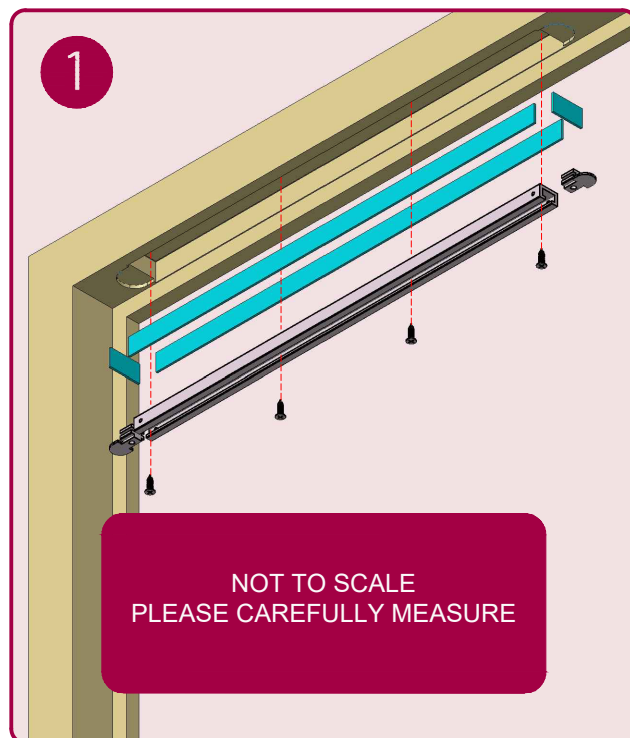
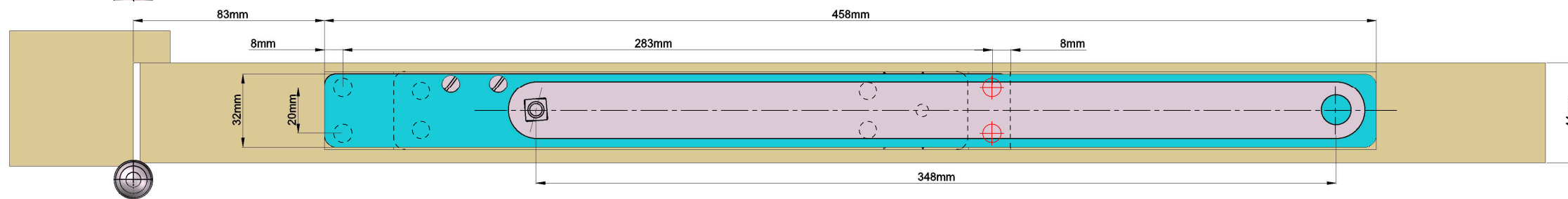


Fire Doors

Use in conjunction with the
IP.114M Intumescent kit +
Fitting Instruction



NOTE: MAKE CLOSER CENTRAL IN THE WIDTH OF THE DOOR



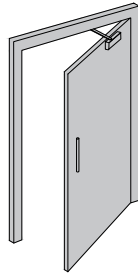
Size 2-4 Power Adjustment

| 4 | | | | |
|--------------|------|-----------------|--------------------|------------|
| No. of turns | Size | Max. door width | Max. opening angle | Max weight |
| -4 | 2* | 850mm | 110° | 45 |
| *0 | 3 | 950mm | 110° | 60 |
| +6 | 4 | 1100mm | 110° | 80 |

* FACTORY PRE-SET
THE PINION BOLT MUST BE TIGHTENED TO 12NM.
A MECHANICAL DOOR CLOSER IS NOT DESIGNED TO OVERCOME POOR FITTING, NOR TO OVERCOME EXCESSIVE AIR PRESSURES OR BINDING SMOKE AND WEATHER SEALS. EXCESSIVE AIR PRESSURES CAN BE CREATED BY THROUGH DRAFT, BY AIR CONDITIONING, BY SMALL ROOMS WITHOUT VENTILATION, OR WHERE NO AIR TRANSFERS GRILLS ARE FITTED. MECHANICAL DOOR CLOSERS ARE DESIGNED TO CLOSE THE STATED AND TESTED SPECIFICATION OF DOOR WEIGHT AND DOORSETS/DOOR ASSEMBLIES WHEN DOORS ARE FITTED WITH CORRECT GAPS AND NOT BINDING ON SEALS. IF YOU ENCOUNTER PROBLEMS WITH DOORS NOT CLOSING PLEASE WATCH OUR '6 WAYS TO TROUBLESHOOT A DOOR CLOSER' VIDEO WHERE DOORS ARE NOT CLOSING DUE TO AIR PRESSURES THEN PROFESSIONAL ADVICE FROM AN AUTHORISED INSTALLER IS RECOMMENDED TO FIT FIRE TESTED AND THIRD PARTY CERTIFICATED AIR TRANSFER GRILLS, AND/OR AUTOMATIC DOOR OPERATORS.

Fire Doors

Use in conjunction with the IP.114M Intumescent kit + Fitting Instruction



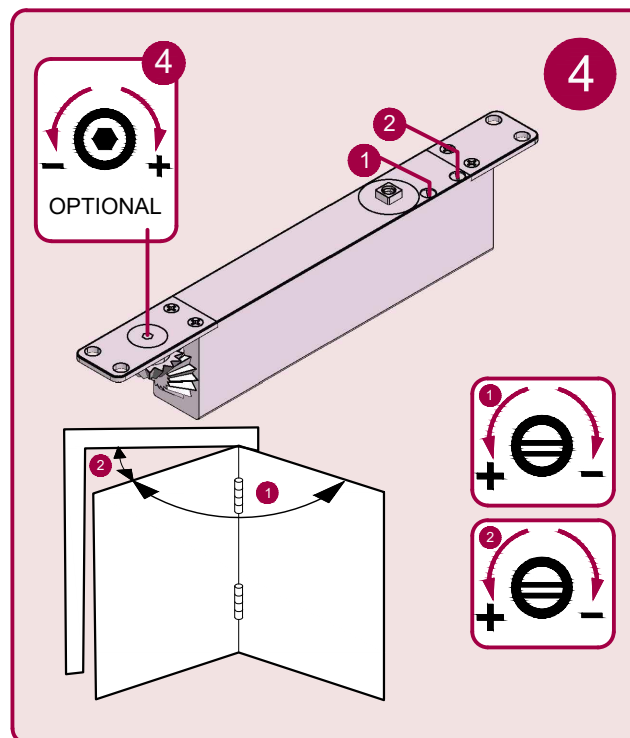
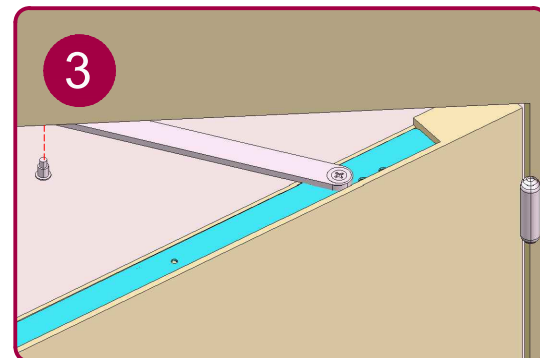
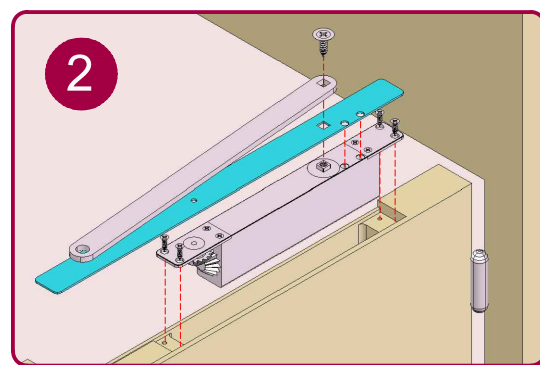
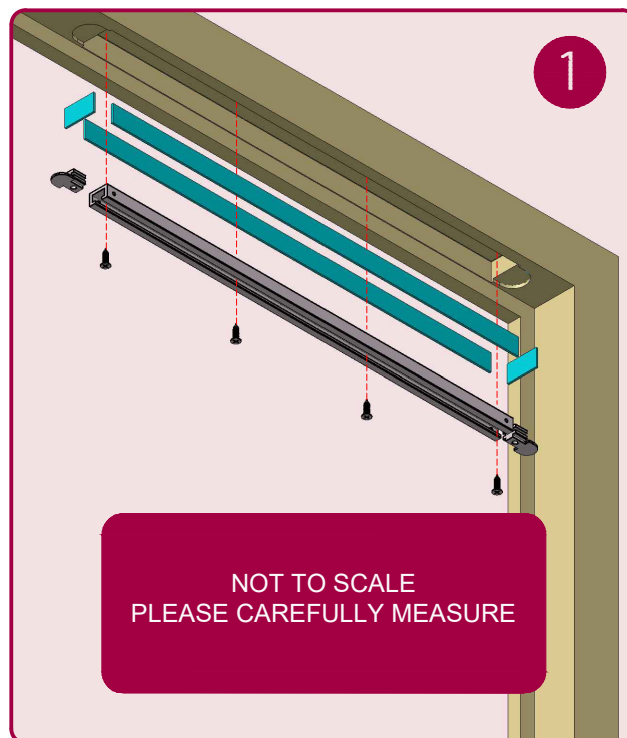
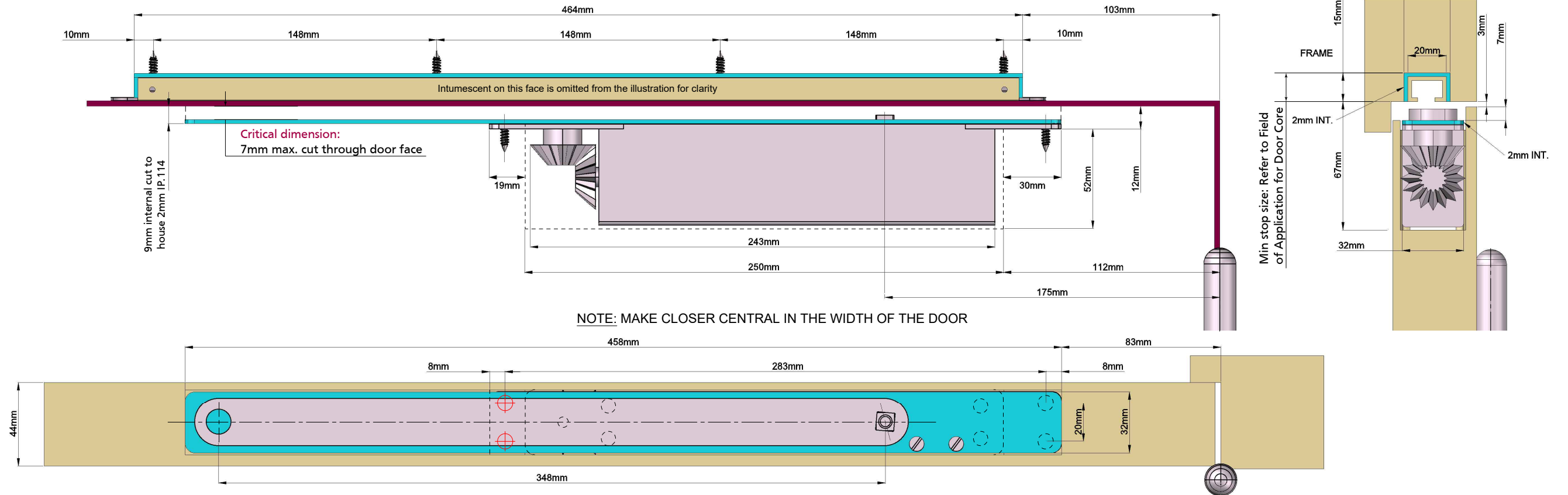
Concealed Closer Single Action ITS11204 With Micro Rail



060619

01246 261 491

www.rutlanduk.co.uk



Size 2-4 Power Adjustment

| 4 | | | | |
|--------------|------|-----------------|--------------------|------------|
| No. of turns | Size | Max. door width | Max. opening angle | Max weight |
| -4 | 2* | 850mm | 110° | 45 |
| *0 | 3 | 950mm | 110° | 60 |
| +6 | 4 | 1100mm | 110° | 80 |

* FACTORY PRE-SET
 THE PINION BOLT MUST BE TIGHTENED TO 12NM.
 A MECHANICAL DOOR CLOSER IS NOT DESIGNED TO OVERCOME POOR FITTING, NOR TO OVERCOME EXCESSIVE AIR PRESSURES OR BINDING SMOKE AND WEATHER SEALS. EXCESSIVE AIR PRESSURES CAN BE CREATED BY THROUGH DRAFT, BY AIR CONDITIONING, BY SMALL ROOMS WITHOUT VENTILATION, OR WHERE NO AIR TRANSFERS GRILLS ARE FITTED. MECHANICAL DOOR CLOSERS ARE DESIGNED TO CLOSE THE STATED AND TESTED SPECIFICATION OF DOOR WEIGHT AND DOORSETS/DOOR ASSEMBLIES WHEN DOORS ARE FITTED WITH CORRECT GAPS AND NOT BINDING ON SEALS. IF YOU ENCOUNTER PROBLEMS WITH DOORS NOT CLOSING PLEASE WATCH OUR "6 WAYS TO TROUBLESHOOT A DOOR CLOSER" VIDEO WHERE DOORS ARE NOT CLOSING DUE TO AIR PRESSURES THEN PROFESSIONAL ADVICE FROM AN AUTHORISED INSTALLER IS RECOMMENDED TO FIT FIRE TESTED AND THIRD PARTY CERTIFICATED AIR TRANSFER GRILLS, AND/OR AUTOMATIC DOOR OPERATORS.