



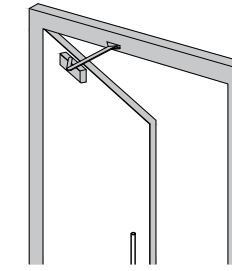
Standard Arm Fitting TS 4204DABCSR

UK
CA

1354

01246 261 491 www.rutlanduk.co.uk

PRINT TO A3 PAPER SIZE FOR 1:1 SCALE



120mm (4 11/16")

115mm (4 1/2")

40mm (1 9/16")

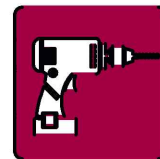
55mm (2 3/16")

37mm (1 7/16")

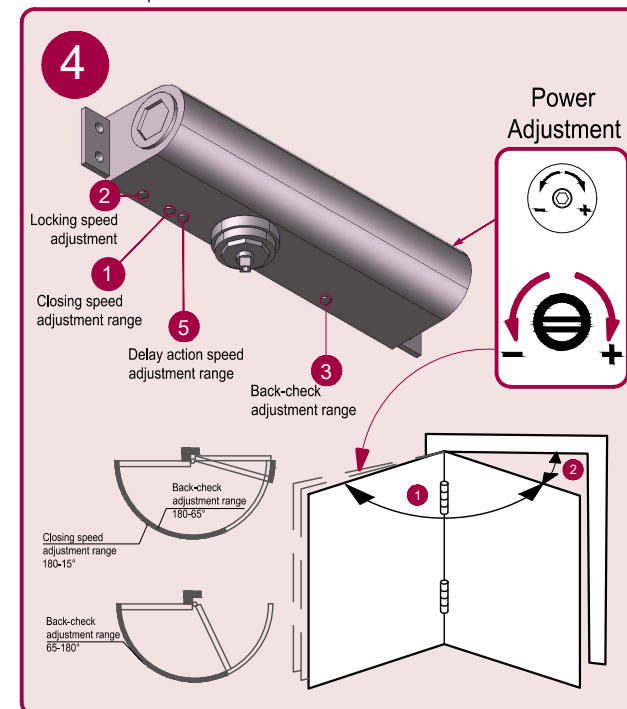
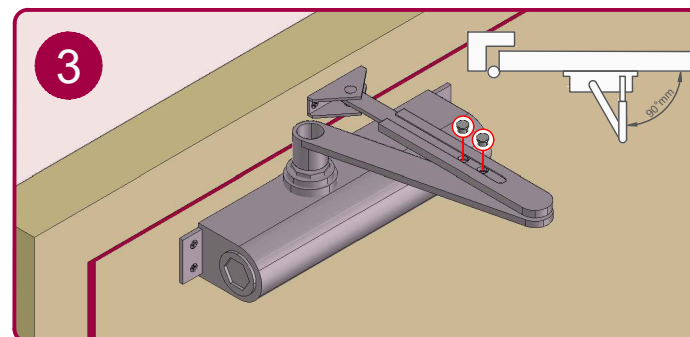
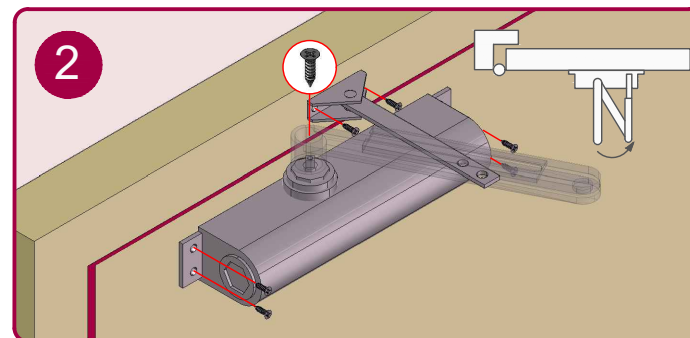
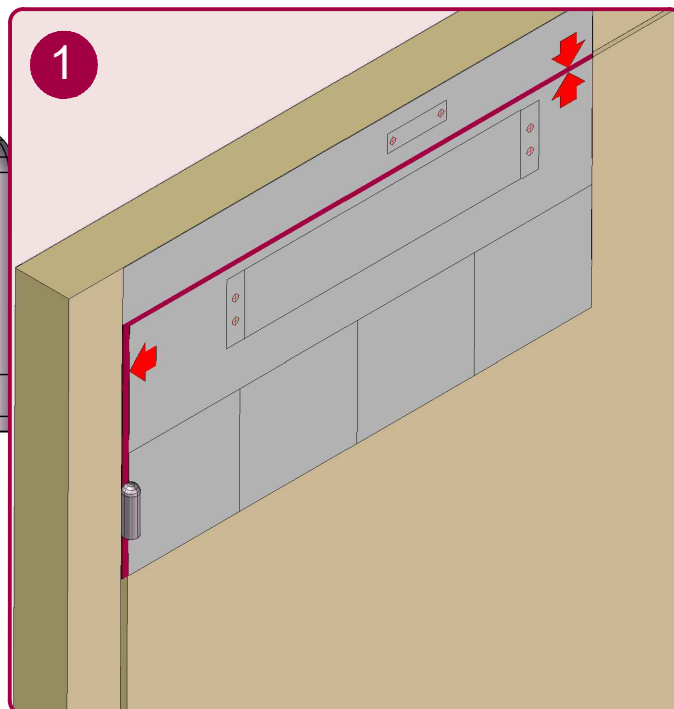
6mm (1/4")

19mm (3/4")

230mm (9 1/16")



Bottom Orifice	Ø3.2	Ø5.2
Mounting Screw		M6



EN 2-4 Power Adjustment

4					
No. of turns	EN Size	Max. door width	Max. opening angle	Max weight	
-6	2*	850mm	180°	45	
*0	3	950mm	180°	60	
+6	4	1030mm	180°	80	

* FACTORY PRE-SET
THE PINION BOLT MUST BE TIGHTENED TO 12NM.
NO PART OF THIS INSTRUCTION CAN BE COPIED OR STORED IN ANY WAY OR FORM MANUALLY OR ELECTRONICALLY WITHOUT THE FULL PERMISSION OF RUTLAND.
A MECHANICAL DOOR CLOSER IS NOT DESIGNED TO OVERCOME POOR FITTING, NOR TO OVERCOME EXCESSIVE AIR PRESSURES OR BINDING SMOKE AND WEATHER SEALS. EXCESSIVE AIR PRESSURES CAN BE CREATED BY THROUGH DRAFT, BY AIR CONDITIONING, BY SMALL ROOMS WITHOUT VENTILATION, OR WHERE NO AIR TRANSFERS GRILLS ARE FITTED. MECHANICAL DOOR CLOSERS ARE DESIGNED TO CLOSE THE STATED AND TESTED SPECIFICATION OF DOOR WEIGHT AND DOORSETS/DOOR ASSEMBLIES WHEN DOORS ARE FITTED WITH CORRECT GAPS AND NOT BINDING ON SEALS. IF YOU ENCOUNTER PROBLEMS WITH DOORS NOT CLOSING PLEASE WATCH OUR '6 WAYS TO TROUBLESHOOT A DOOR CLOSER' VIDEO WHERE DOORS ARE NOT CLOSING DUE TO AIR PRESSURES THEN PROFESSIONAL ADVICE FROM AN AUTHORISED INSTALLER IS RECOMMENDED TO FIT FIRE TESTED AND THIRD PARTY CERTIFICATED AIR TRANSFER GRILLS, AND/OR AUTOMATIC DOOR OPERATORS.

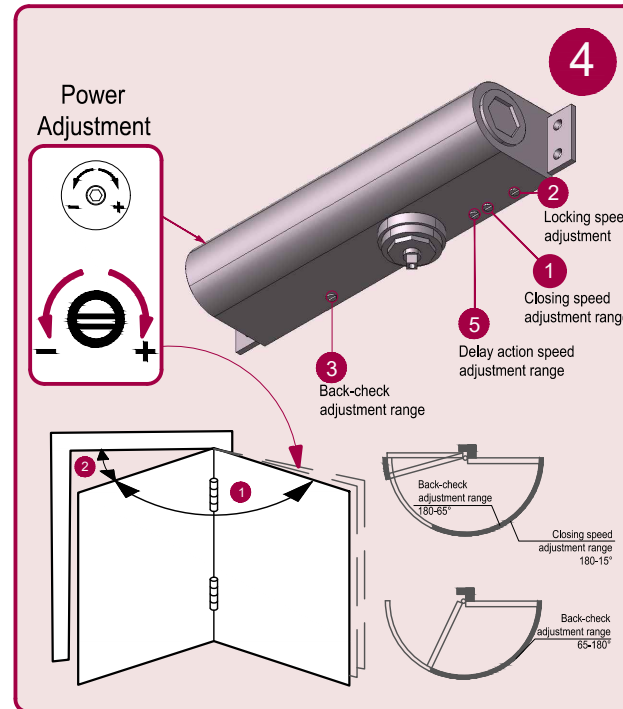
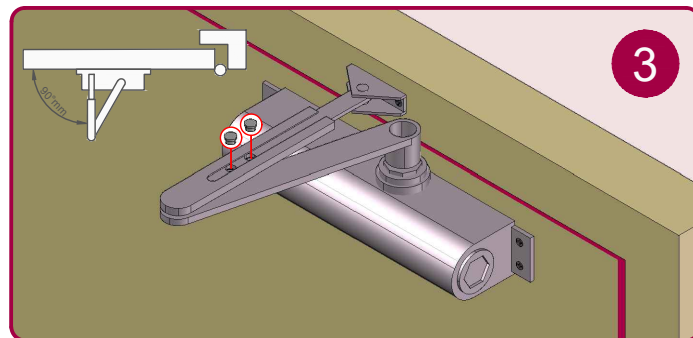
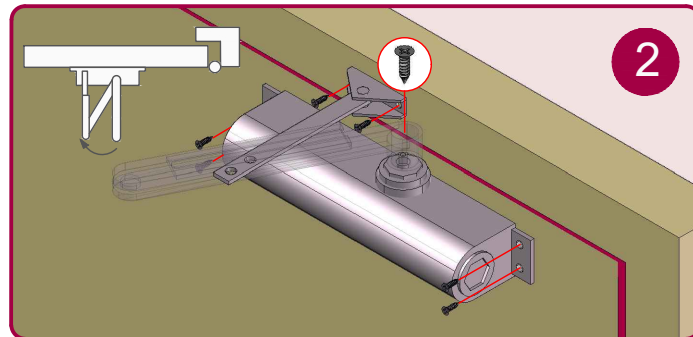
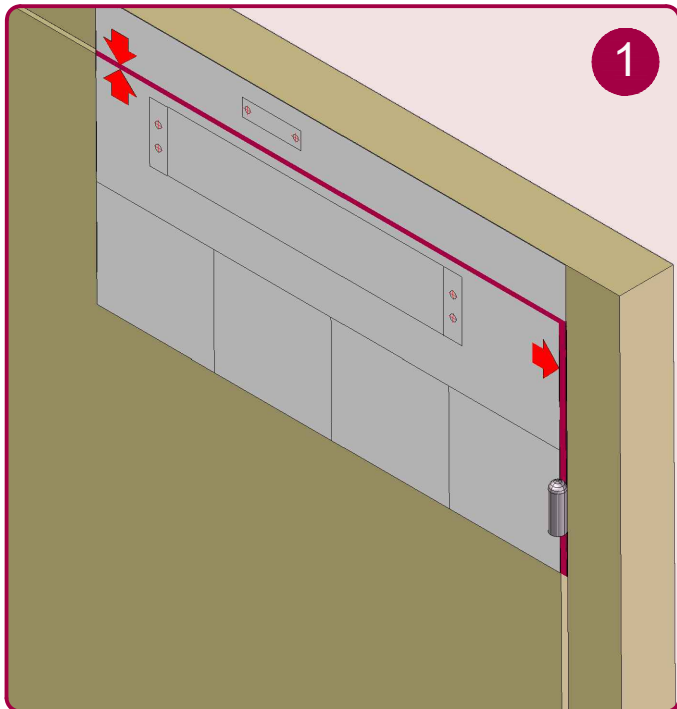
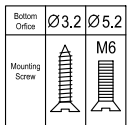
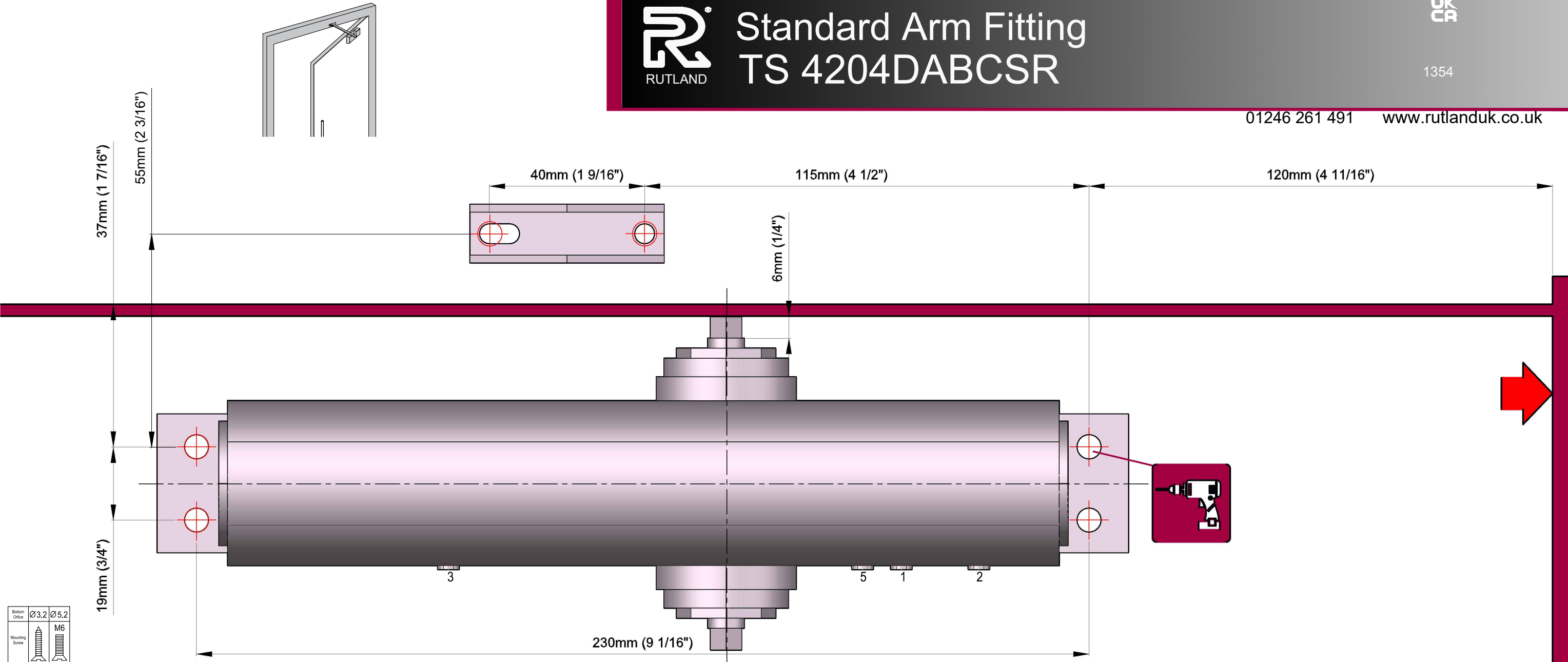


Standard Arm Fitting TS 4204DABCSR

UK
CA

1354

01246 261 491 www.rutlanduk.co.uk



EN 2-4 Power Adjustment

No. of turns	EN Size	Max. door width	Max. opening angle	Max weight (KG)
-6	2*	850mm	180°	45
*0	3	950mm	180°	60
+6	4	1030mm	180°	80

* FACTORY PRE-SET
THE PINION BOLT MUST BE TIGHTENED TO 12NM.
NO PART OF THIS INSTRUCTION CAN BE COPIED OR STORED IN ANY WAY OR FORM MANUALLY OR ELECTRONICALLY WITHOUT THE FULL PERMISSION OF RUTLAND.
A MECHANICAL DOOR CLOSER IS NOT DESIGNED TO OVERCOME POOR FITTING, NOR TO OVERCOME EXCESSIVE AIR PRESSURES OR BINDING SMOKE AND WEATHER SEALS. EXCESSIVE AIR PRESSURES CAN BE CREATED BY THROUGH DRAFT, BY AIR CONDITIONING, BY SMALL ROOMS WITHOUT VENTILATION, OR WHERE NO AIR TRANSFERS GRILLS ARE FITTED. MECHANICAL DOOR CLOSERS ARE DESIGNED TO CLOSE THE STATED AND TESTED SPECIFICATION OF DOOR WEIGHT AND DOORSETS/DOOR ASSEMBLIES WHEN DOORS ARE FITTED WITH CORRECT GAPS AND NOT BINDING ON SEALS. IF YOU ENCOUNTER PROBLEMS WITH DOORS NOT CLOSING PLEASE WATCH OUR '6'WAYS TO TROUBLESHOOT A DOOR CLOSER' VIDEO WHERE DOORS ARE NOT CLOSING DUE TO AIR PRESSURES THEN PROFESSIONAL ADVICE FROM AN AUTHORISED INSTALLER IS RECOMMENDED TO FIT FIRE TESTED AND THIRD PARTY CERTIFICATED AIR TRANSFER GRILLS, AND/OR AUTOMATIC DOOR OPERATORS.