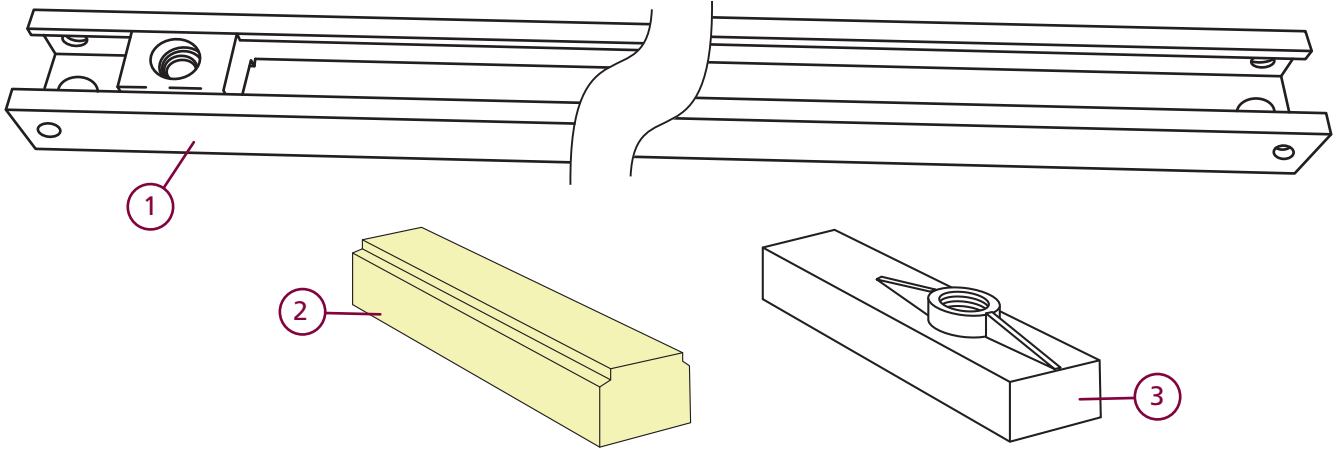




INSTRUCTION MANUAL

Slide Arm Cushion Stop

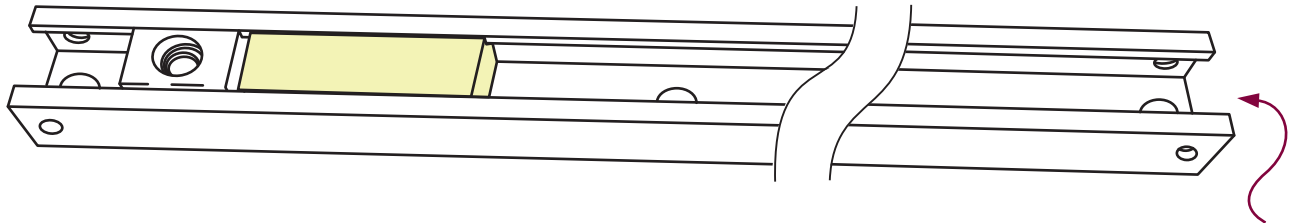
Cushion Stop Installation



KEY: ① Slide Rail ② Cushion Stop ③ Shuttle

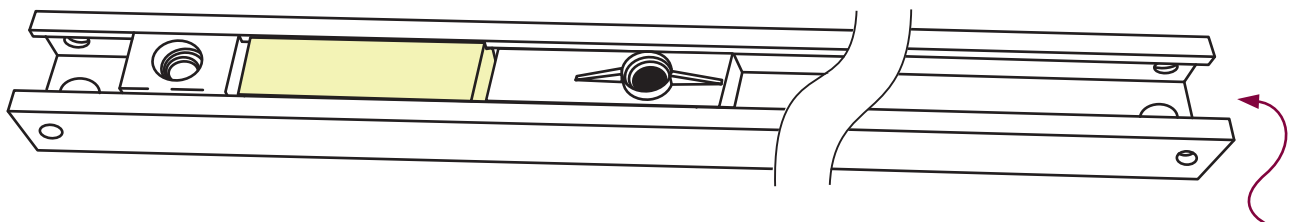
Step 1

Slide the cushion (2) into the rail (1) up against the stop.



Step 2

Insert the white shuttle (3) and continue fixing the closer and connecting the rail (1).



Enhancing life safety
at every fire door



Rutland UK
Whittington Way
Chesterfield S41 9AG

t. +44 (0)1246 261491
e. sales@rutlanduk.co.uk
w. rutlanduk.co.uk