



Multipoint Lock with Keeps & Intumescent kits

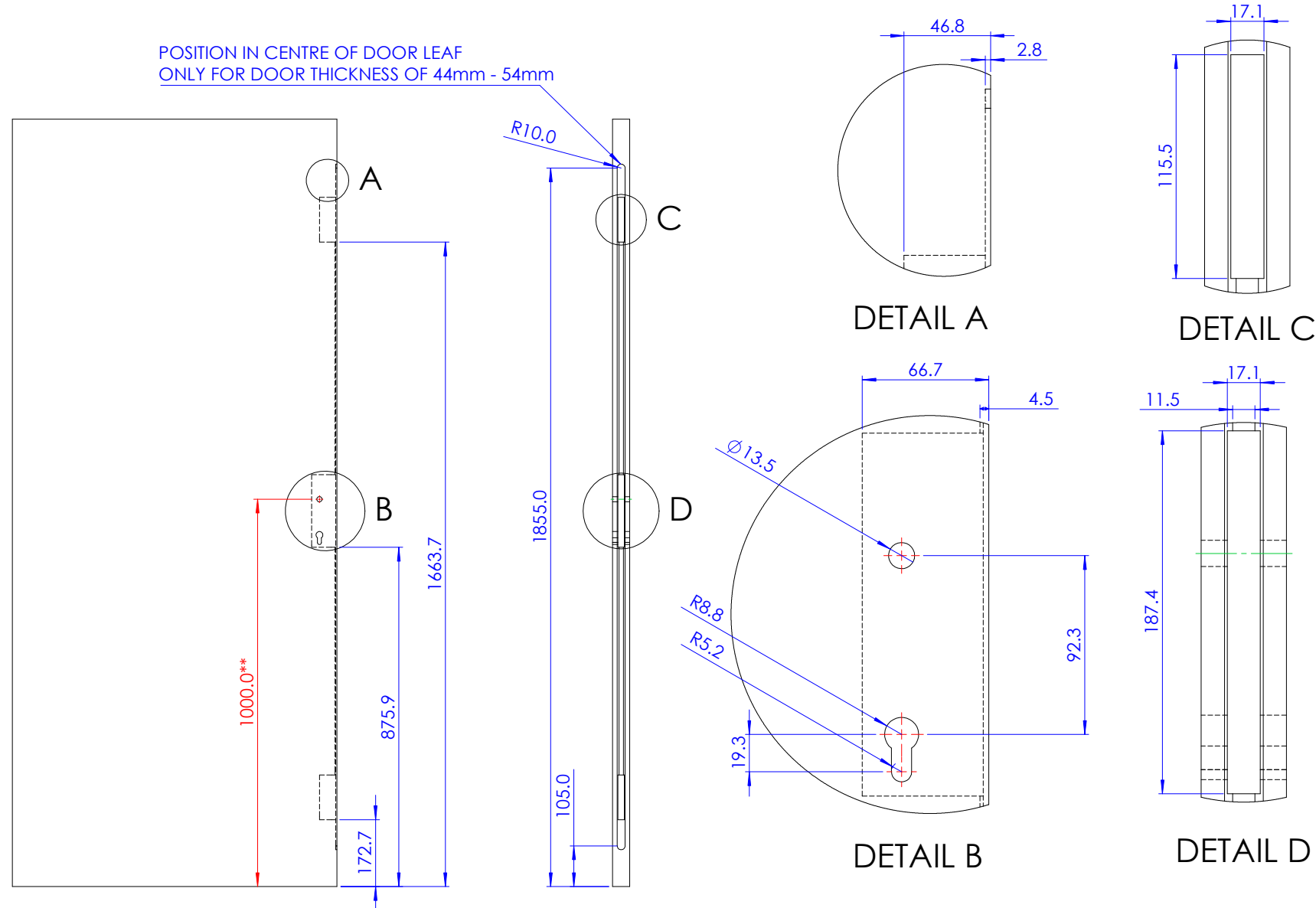
Fitting Instruction

TEL: +44 (0) 1246 261 491 | www.rutlanduk.co.uk



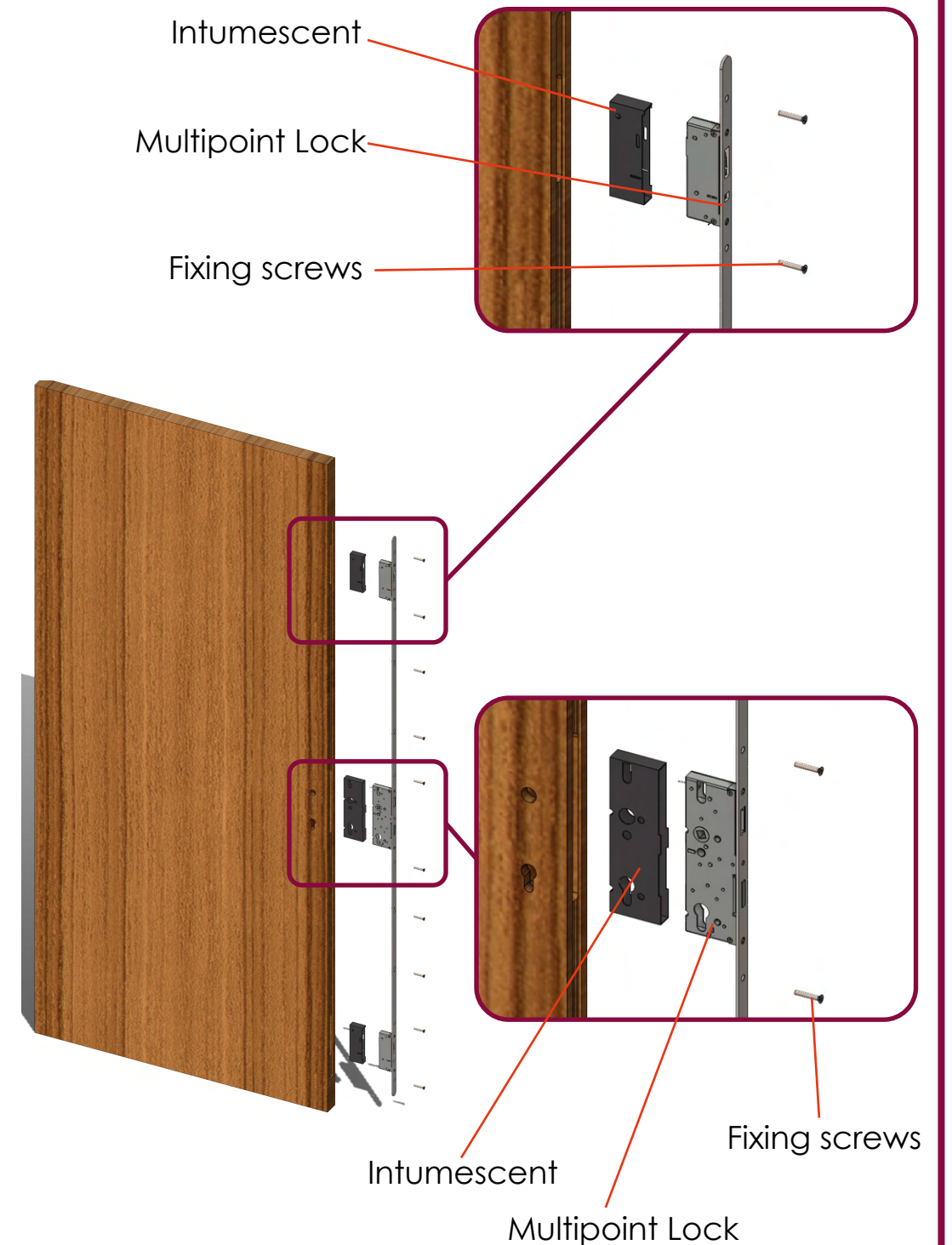
Operations and Maintenance Manual

Door leaf cutout dimension of RMP3 Multipoint Lock



**Dimensions are based on 1000mm handle height from the ground, and should be adjusted up or down based on the application

Assembly view of RMP3. Multipoint Lock





Multipoint Lock with Keeps & Intumescent kits

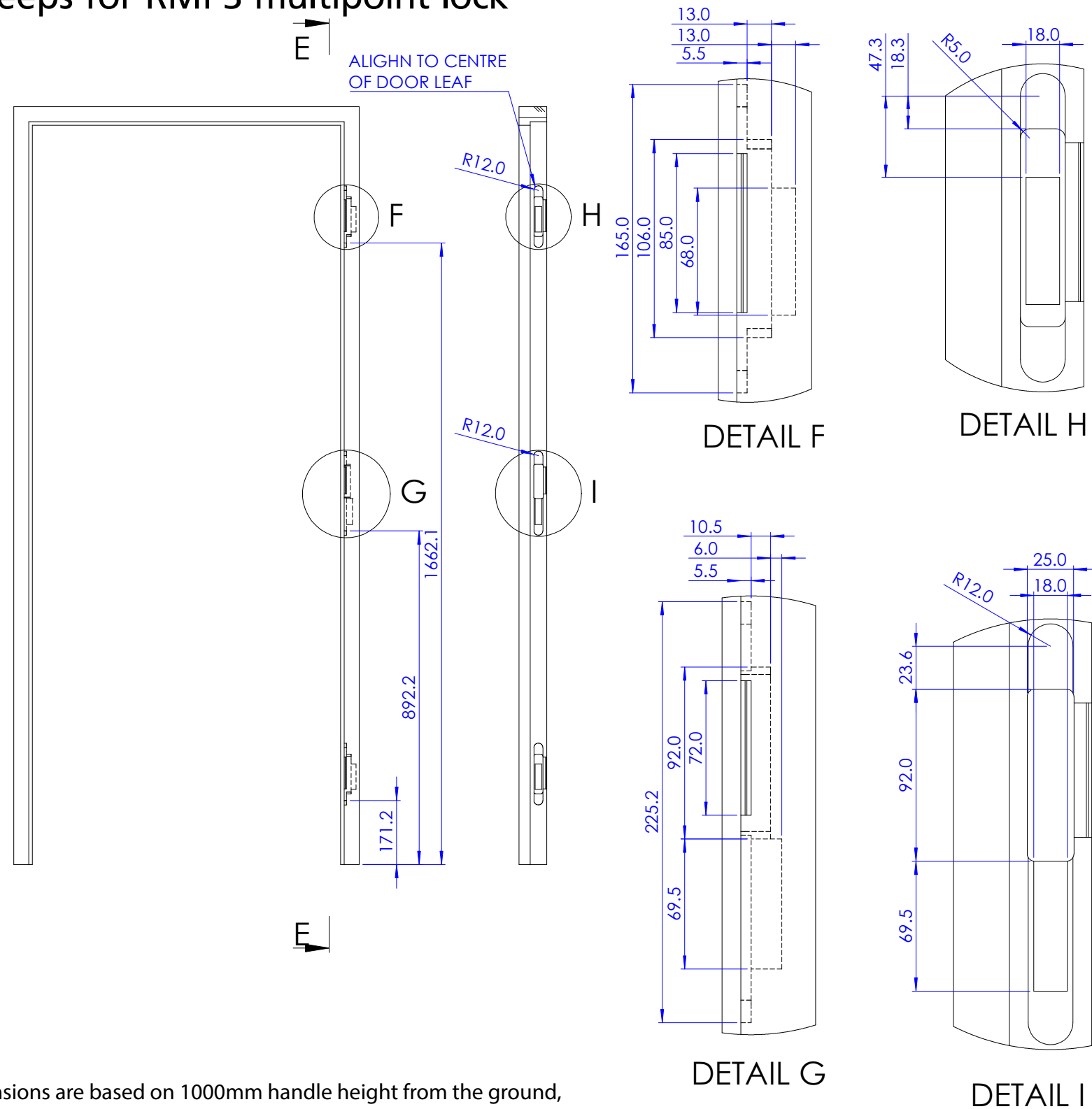
Fitting Instruction



Operations and Maintenance Manual

TEL: +44 (0) 1246 261 491 | www.rutlanduk.co.uk

Door Frame cutout dimension of Keeps for RMP3 multipoint lock



**Dimensions are based on 1000mm handle height from the ground, and should be adjusted up or down based on the application

Assembly view of RMP3. Multipoint Lock

