

PRODUCT FILE

# TS.24

---

**Pack includes:**

- Specification/Data sheet
- Product codes
- EU CE cert
- EU CE Declaration of Performance (DoP)
- UKCA cert
- UKCA Declaration of Performance (DoP)
- Fitting instructions
- O&M Manual

SLIDE ARM DOOR CLOSERS

# TS.24



SLIDE ARM DOOR CLOSER

# TS.24

With a rack+pinion mechanism giving fine control throughout both the opening and closing cycle, the Rutland TS.24 slide arm door closer has an opening angle of up to 180° and is power adjustable by spring, power size 2-4.

- 180° Opening Angle
- Total projection of 40mm from the door
- Available in Silver, Satin Nickel & White for next day delivery



3rd Party Certification



Opening Angle 180°



Two-Stage Speed Regulation



Guarantee



Max Door Width 1100mm



Max Door Weight 80Kg



**Finishes**

See page 98 for more detail



SE Silver

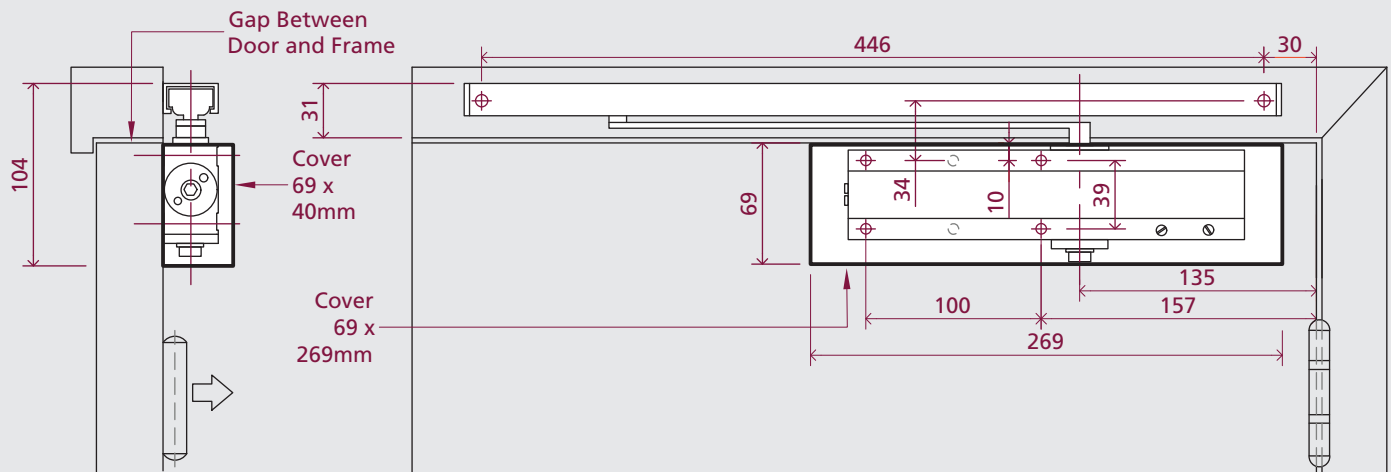


SNP Satin Nickel



WH White

| Product Features                   | TS.24              |
|------------------------------------|--------------------|
| Delayed Action                     | -                  |
| Back Check                         | -                  |
| Opening Angle                      | 180°               |
| Fig.1 Pull Side Door Width         | 490-1100mm         |
| Fig.66 Push Side Door Width        | 490-1100mm         |
| Max Door Weight                    | 80kg               |
| Power Adjustment                   | By Spring          |
| Hold Open (not for fire doors)     | o                  |
| Dimensions (including cover)       | W269 x H69 x D40mm |
| <b>Certification Compliance</b>    |                    |
| Certifire                          | -                  |
| UKCA                               | ✓                  |
| CE                                 | ✓                  |
| BS EN 1154                         | ✓                  |
| BS EN 1634                         | ✓                  |
| UL10C                              | -                  |
| UL228                              | -                  |
| ANSI BHMA                          | -                  |
| IFCC                               | ✓                  |
| EPD 3.09E+01 kg CO <sub>2</sub> eq | ✓                  |
| <b>Key:</b> ✓ Yes - No o Option    |                    |



All dimensions shown are in mm.

For fitting instructions see website

| Description   | EN Size | Finish       | Re-order Code | Product Code | Box Qty |
|---|---------|--------------|---------------|--------------|---------|
| <b>TS.24</b>  |         |              |               |              |         |
|  TS.24 Combined unit (closer, slide arm, cover,) | 2-4     | Silver       | <b>12105</b>  | TS.24.SE     | 6       |
|   | 2-4     | Satin Nickel | <b>12106</b>  | TS.24.SNP    | 6       |
|   | 2-4     | White        | <b>12242</b>  | TS.24.WH     | 6       |
| Push Side Brackets  | -       | Silver       | <b>11036</b>  | PSB.24.SE    |         |
|   |         | Satin Nickel | <b>11040</b>  | PSB.24.SNP   |         |
|   |         | White        | <b>11043</b>  | PSB.24.WH    |         |

**CERTIFICAT DE CONSTANCE DES PERFORMANCES**  
**CERTIFICATE OF CONSTANCY OF PERFORMANCE**

**N° 1812-CPR-1812**

Conformément au Règlement 305/2011/EU du Parlement européen et du Conseil du 9 mars 2011 (Règlement Produits de Construction – RPC), il a été établi que le produit de construction :

*In compliance with Regulation 305/2011/EU of the European Parliament and of the Council of 9 March 2011 (the Construction Products Regulation or CPR), it was established that the construction product:*

Produit  
*Product*

**Dispositif de fermeture de porte avec amortissement**  
*Controlled door closing device*

Référence du produit  
*Reference of the product*

**Rutland TS.24 Overhead Door Closer**

mis sur le marché par ou pour  
*placed on the market by or for*

**Rutland UK**  
**Whittington Way,**  
**Chesterfield, S41 9AG**  
**Royaume Uni / United Kingdom**

et produit dans l'usine de fabrication de  
*and produced in the manufacturing plant located in*

**E/010**

est soumis par le fabricant à un contrôle de production en usine, et que EFFECTIS France, organisme de certification notifié, a réalisé les essais/calculs de type initiaux relatifs aux caractéristiques concernées du produit, l'inspection initiale de l'usine et du contrôle de la production en usine, et réalise la surveillance continue, l'évaluation et l'acceptation du contrôle de la production en usine.

*is submitted by the manufacturer to a factory production control, and that the notified certification body EFFECTIS France, has performed the initial type-testing for the relevant characteristics of the product, the initial inspection of the factory and of the factory production control and performs the continuous surveillance, assessment and approval of factory production control.*

Ce certificat atteste que toutes les dispositions concernant l'évaluation et la vérification de la constance des performances et les performances décrites dans l'annexe ZA de la norme de référence **EN 1154 : 1996 +A1 : 2002** pour le système 1 sont appliquées, et que le ou les produits satisfont toutes les exigences prescrites.

*This certificate attests that all provisions concerning the assessment and verification of constancy of performance and the performance, described in Annex ZA of the standard **EN 1154 : 1996 +A1 : 2002** under system 1 are applied, and that the product(s) fulfill(s) all the prescribed requirements set out above.*

Ce certificat, délivré pour la première fois le **8 décembre 2020**, demeure valide tant que les exigences relatives aux méthodes d'essai et au contrôle de production en usine incluses dans la norme harmonisée et utilisées pour évaluer les caractéristiques déclarées restent inchangées, et que le produit et les conditions de fabrication dans l'usine ne sont pas modifiés de manière significative.

*This certificate, first issued on **December 8<sup>th</sup>, 2020** remains valid as long as the test methods and/or factory production control requirements included in the harmonised standard, used to assess the performance of the declared characteristics, do not change, and the product and the manufacturing conditions in the plant are not modified significantly.*

Ce certificat permet au fabricant, ses mandataires ou ses distributeurs, établis dans l'Espace Economique Européen, d'apposer le marquage CE.

*This certificate allows the manufacturer, its mandatories or its distributors, stated in the European Economic Area, to affix the CE marking.*

Certificat établi à Saint-Aubin le / *Certificate established at Saint-Aubin on : **22/07/2023**.*

Par déléation du Directeur technique Certification / *By delegation of the technical Certification director.*

Yannick LE TALLEC  
Directrice Certification / *Certification director*



Organisme notifié  
*Notified body*  
**n° 1812**

**ANNEXE AU CERTIFICAT DE CONSTANCE DES PERFORMANCES N° 1812-CPR-1812**  
**A LA NORME EN 1154 : 1996 +A1 : 2002**  
**ANNEX TO THE CERTIFICATE OF CONSTANCY OF PERFORMANCE**  
**TO THE STANDARD EN 1154 : 1996 +A1 : 2002**

Produit / Product **Dispositif de fermeture de porte avec amortissement**  
*Controlled door closing device*

Référence du produit / Reference of the product **Rutland TS.24 Overhead Door Closer**

Certificat délivré à / Certificate delivered to **Rutland UK**  
**Whittington Way,**  
**Chesterfield, S41 9AG**  
**Royaume Uni / United kingdom**

**Description du champ couvert par le certificat / Description of the field covered by the certificate:**

Ferme porte avec amortissement - dispositif de fermeture de porte contrôlé à action unique à force ajustable  
*Overhead door closer - Adjustable strength single action controlled door closing device*

| Installation du produit / Product installation | Classification EN 1154 / Classification EN 1154 |   |       |   |   |   |
|--|---|---|-------|---|---|---|
| Position standard / Standard position          | 4   | 8 | 2 - 4 | 1 | 1 | 3 |

Ferme porte avec amortissement - dispositif de fermeture de porte contrôlé à action unique à force ajustable  
*Overhead door closer - Adjustable strength single action controlled door closing device*

| Installation du produit / Product installation                   | Classification EN 1154 / Classification EN 1154 |   |       |   |   |   |
|--|---|---|-------|---|---|---|
| Montage travers d'imposte côté poussée / Transom mount push side | 3   | 8 | 2 - 4 | 1 | 1 | 3 |

Certificat établi à Saint-Aubin le / Certificate established at Saint-Aubin on : **22/07/2023.**

Par délégation du Directeur technique Certification / By delegation of the technical Certification director,

  
**Yannick LE TALLEC**  
 Directrice Certification / Certification director

# DECLARATION OF PERFORMANCE



## DoP-TS.24-1-CE



### (TS.24 Fig 1)

- Unique identification code of the product / type:-  
**TS.24 2-4 variable power Surface Fixed Door Closer with Fig 1 Standard Fixing and Fig 61 Transom Fixing pull side, with adjustable latch action and 180 degree maximum opening angle.**
- **Re-order Code allowing identification of the construction product as required under Article 11(4) of CPR:**  
12105, 12106, 12242
- Intended use:- For use on fire/smoke compartmentation doors, when fitted in accordance with the supplied fitting instructions and maintained to the manufacturers O&M Manual.
- Manufacturer:- Rutland Door Controls Europe Limited, Unit 5B, Fingal Bay Business Park, Balbriggan, Dublin, Ireland
- System or systems assessment and verification of constancy of performance (AVCP):- System 1
- Harmonised Standard:- EN 1154:1996 + A1:2002
- Notified Body:- Efectis EU notified body no. 1812
- Certification No.:- 1812-CPR-1812
- Declared Performance:-

Conditioning: Standard Position (Fig 1) and Transom Fixing (Fig 61) power size 2-4, with adjustable latch action and optional back check, 180 degree maximum opening angle

| Essential Characteristics           | Performance                                | Harmonised Technical Specification |
|-------------------------------------|--|------------------------------------|
| <i>Self-closing (5.2.1 General)</i> |  | EN 1154:1996 + A1:2002             |
| 5.2.2 Durability                    | 500,000 test cycles                        |                                    |
| 5.2.3 Closing moment                | Power size 2 - 4                           |                                    |
| 5.2.4 Opening moment                | Power size 2 - 4                           |                                    |
| 5.2.5 Efficiency                    | Pass                                       |                                    |
| 5.2.6 Closing time                  | Pass                                       |                                    |
| 5.2.7 Angles of operation           | Grade 4 for closing doors from 180 degrees |                                    |
| 5.2.8 Overload performance          | Pass                                       |                                    |
| 5.2.9 Temperature dependence        | -15°C to +40°C                             |                                    |
| 5.2.10 Fluid leakage                | Pass                                       |                                    |
| 5.2.11 Damage                       | Pass                                       |                                    |
| 5.2.12 Latch control                | Pass                                       |                                    |
| 5.2.13 Back check                   | Pass                                       |                                    |
| 5.2.15 Adjustable closing force     | Pass                                       |                                    |

# DECLARATION OF PERFORMANCE



|                                   |   |                           |
|-----------------------------------|---|---------------------------|
| <i>Durability of Self Closing</i> |   | EN 1154:1996 +<br>A1:2002 |
| 5.2.2 Durability                  | 500,000 test cycles – Grade 8   |                           |
| 5.2.17 Corrosion resistance       | High corrosion resistance - Grade 3 (96 hours)  |                           |
| Dangerous Substances              | Pass: the materials in the door closer do not contain or release any dangerous substances in excess of the maximum levels specified in existing European material standards or any national regulations (1) |                           |

The performance of the product identified above is in conformity with the set of declared performance/s.

This declaration of performance is issued, in accordance with Regulation (EU) No 305/2011, under the sole responsibility of the manufacturer identified above.

Signed for and on behalf of the manufacturer by:

A handwritten signature in black ink, appearing to read 'Kevin O'Reilly', written over a horizontal line.

Kevin O'Reilly  
Technical Director

Dated 18-04-2024





## CERTIFICATE OF CONSTANCY OF PERFORMANCE

**1720-CPR-0187**

In compliance with Statutory Instruments 2019 No.465 of the United Kingdom Houses of Parliament 5th March 2019 (The Construction Products (Amendment etc.) (EU Exit) Regulations 2019), this certificate applies to the construction product:

### ***Rutland TS.24 Overhead Door Closer –***

an overhead closer with optional cushion stop back-check for use on single action, single or double leaf fire resisting and smoke control doors.

Particular conditions applicable: **Power size 2 to 4 in Standard or Transom fixing position with adjustable latch action & optional cushion stop back-check**

product classification

|   |   |        |   |   |   |
|---|---|--------|---|---|---|
| 4 | 8 | 2<br>4 | 1 | 1 | 3 |
|---|---|--------|---|---|---|

produced by

***Rutland UK***  
Whittington Way,  
Chesterfield, S41 9AG

and produced in the manufacturing plant(s)

**Factory Code: B - O**

This certificate attests that all provisions concerning the assessment and verification of constancy of performance and the performances described in Annex ZA of the standard(s)

**BS EN 1154:1997 + A1:2002**

Under system 1 are applied and that the product fulfils all the prescribed requirements set out above.

This certificate was first issued on 1st January 2021 and will remain valid as long as neither the designated standard, the construction product, the AVCP methods nor the manufacturing conditions in the plant are not modified significantly unless suspended or withdrawn by the approved product certification body.



Princes Risborough, UK

Director of Certification

**IFC Certification Ltd**  
**UK Approved Body No. 1720**

20 Park Street, Princes Risborough, Buckinghamshire, HP27 9AH, UK  
Tel: +44(0) 1844 275500, Fax: +44(0) 1844 274002, E-mail: [info@ifccertification.com](mailto:info@ifccertification.com)  
Registered No: 4777898 England  
©IFC Certification Ltd 2021

**Construction Products Regulation  
Declaration of Performance (DoP)**

According to Annex III of the Regulation (EU) No 305/2011



**TS.24 DoP No. TS24CPR2012223**

From 1 July 2013, CE Marking of Construction Products covered by harmonised European Standards is mandatory.

Following the transition period of the UK leaving the EU this product will be both CE marked and UKCA marked. See section 8.2 for more information.

- 
- 1. Unique identification code of the product/type:**  
TS.24 surface fixed door closer
  - 2. Re-order Code allowing identification of the construction product as required under Article 11(4) of CPR:**  
12105, 12106
  - 3. Intended use or uses of the construction product, in accordance with the applicable harmonized technical specification, as foreseen by the manufacturer:**  
For use on fire/smoke compartmentation doors, when fitted and maintained in accordance with the supplied fitting instructions and O&M manual.
  - 4. Name, registered trade name or registered trade mark and contact address of the manufacturer as required under Article 11 (5):**  
Rutland UK, Whittington Way, Chesterfield, S41 9AG, UK
  - 5. Where applicable. Name and contact address of authorised representative whose mandate covers the tasks specified in Article 12(2):**  
N/A
  - 6. System or systems of assessment and verification of constancy of performance of the construction product as set out in CPR, Annex V:**  
System 1
  - 7. In case of the declaration of performance concerning a construction product covered by a harmonized standard:**  
EN 1154:1996 + A1:2002

**8.1 Notified body**

IFCC Notified body No. 1720, IFCC will become UK conformity assessment body from January 2021 at which point CE will be transferred to Efectis EU notified body no. 1812

## 8.2 ID Certificate/s

| CE            | UKCA          |
|---------------|---------------|
| 1812-CPR-1812 | 1720-CPR-0183 |

### UKCA

1720-CPR-0183 will become UKCA mark and will be printed on products by 1st January 2022. CE transfer to EU notified body 1812 will take place 4th January 2021.

### CE

1812-CPR-1812 is the new EU-27 CE certificate from the date of transfer. Notified Body number 1812 will be printed on products and packaging manufactured after the date of CE transfer.

Below guidance on accepted marking or combination of marking from Gov.UK guidance <https://www.gov.uk/guidance/using-the-ukni-marking-from-1-january-2021>

|   | Type of good   | Accepted marking or |
|---|--|---------------------|
| <b>Placing goods on the market in Northern Ireland</b>  | Manufactured goods being placed on the market in NI using an EU conformity assessment body | CE                  |
|   | Manufactured goods being placed on the market in NI using a UK-based body                  | CE and UKNI         |
| <b>Placing goods on the market in Great Britain</b>   | Manufactured goods being placed on the GB market until end of 2021                         | UKCA or CE          |
|   | Manufactured goods placed on the GB market from 1 Jan 2022                                 | UKCA                |
| <b>Placing qualifying Northern Ireland goods on the market in Great Britain (unfettered access)</b> | Qualifying Northern Ireland goods being placed on the GB market under unfettered access    | CE or CE and UKNI   |
| <b>Placing goods on the EU market</b>   | Manufactured goods being placed on the EU market   | CE                  |

\*You may use combinations of the product markings listed in each box and your goods may be acceptable with more than one marking. For example, a product with both the CE and UKCA markings can be placed on the EU market.

Below is advice on placing manufactured goods on the EU market from 1 January 2021 - source <https://www.gov.uk/guidance/placing-manufactured-goods-on-the-eu-market-from-1-january-2021>

### Certificates and documentation

If you transfer your existing certificate to an EU notified body then you will need to update the 4-digit notified body number on your products. You will not need to do this for products already on the market or which were manufactured before the transfer took place.

- Power size 2, 3, 4 in regular fixing application, optional back check and adjustable latch action

| Essential Characteristics           | Performance   | Harmonised Technical Specification |
|-------------------------------------|---|------------------------------------|
| <i>Self-closing (5.2.1 General)</i> |   | EN1154:1996 + A1:2002              |
| 5.2.2 Durability                    | 500,000 test cycles   |                                    |
| 5.2.3 Closing moment                | Power size 2, 3, 4  |                                    |
| 5.2.4 Opening moment                | Power size 2, 3, 4  |                                    |
| 5.2.5 Efficiency                    | Pass  |                                    |
| 5.2.6 Closing time                  | Pass  |                                    |
| 5.2.7 Angles of operation           | Grade 4 for closing doors from 180 degrees  |                                    |
| 5.2.8 Overload performance          | Pass  |                                    |
| 5.2.9 Temperature dependence        | -15°C to +40°C  |                                    |
| 5.2.10 Fluid leakage                | Pass  |                                    |
| 5.2.11 Damage                       | Pass  |                                    |
| 5.2.12 Latch control                | Pass  |                                    |
| 5.2.13 Back check                   | Pass  |                                    |
| 5.2.14 Delayed action               | Pass  |                                    |
| 5.2.15 Adjustable closing force     | Pass  |                                    |
| <i>Durability of Self Closing</i>   |   | EN1154:1996 + A1:2002              |
| 5.2.2 Durability                    | 500,000 test cycles   |                                    |
| 5.2.17.1 Corrosion                  | Grade 3 (96 hours)  |                                    |
| 5.2.17.2 Corrosion                  | Pass  |                                    |
| Dangerous Substances Annex ZA3      | Pass: the materials in the door closer do not contain or release any dangerous substances in excess of the maximum levels specified in existing European material standards or any national regulations (1) |                                    |

- Power size 3 in Parallel arm fixing application, with adjustable latch action. 160 degrees max opening angle.

| Essential Characteristics           | Performance   | Harmonised Technical Specification |
|-------------------------------------|---|------------------------------------|
| <i>Self-closing (5.2.1 General)</i> |   | EN1154:1996 + A1:2002              |
| 5.2.2 Durability                    | 500,000 test cycles   |                                    |
| 5.2.3 Closing moment                | Power size 3  |                                    |
| 5.2.4 Opening moment                | Power size 3  |                                    |
| 5.2.5 Efficiency                    | Pass  |                                    |
| 5.2.6 Closing time                  | Pass  |                                    |
| 5.2.7 Angles of operation           | Grade 3 for closing doors from 160 degrees                                      |                                    |
| 5.2.8 Overload performance          | Pass  |                                    |
| 5.2.9 Temperature dependence        | -15°C to +40°C  |                                    |
| 5.2.10 Fluid leakage                | Pass  |                                    |
| 5.2.11 Damage                       | Pass  |                                    |
| 5.2.12 Latch control                | Pass  |                                    |
| 5.2.13 Back check                   | Pass  |                                    |
| 5.2.14 Delayed action               | Pass  |                                    |
| 5.2.15 Adjustable closing force     | Pass  |                                    |
| <i>Durability of Self Closing</i>   |   | EN1154:1996 + A1:2002              |
| 5.2.2 Durability                    | 500,000 test cycles   |                                    |
| 5.2.17.1 Corrosion                  | Grade 3 (96 hours)  |                                    |
| 5.2.17.2 Corrosion                  | Pass  |                                    |
| Hazardous Substances Annex ZA3      | Pass: No hazardous substances in terms of the EC guidelines and REACH directive |                                    |

10. The performance of the product identified in points 1 and 2 is in conformity with the declared performance in point 9. This Declaration of Performance is issued under the sole responsibility of the manufacturer identified in point 4.

Signed for an behalf of the manufacturer:



Neil Smith (Technical & Compliance Director)

**Place and date of issue**

Chesterfield, UK. 22.12.2020.

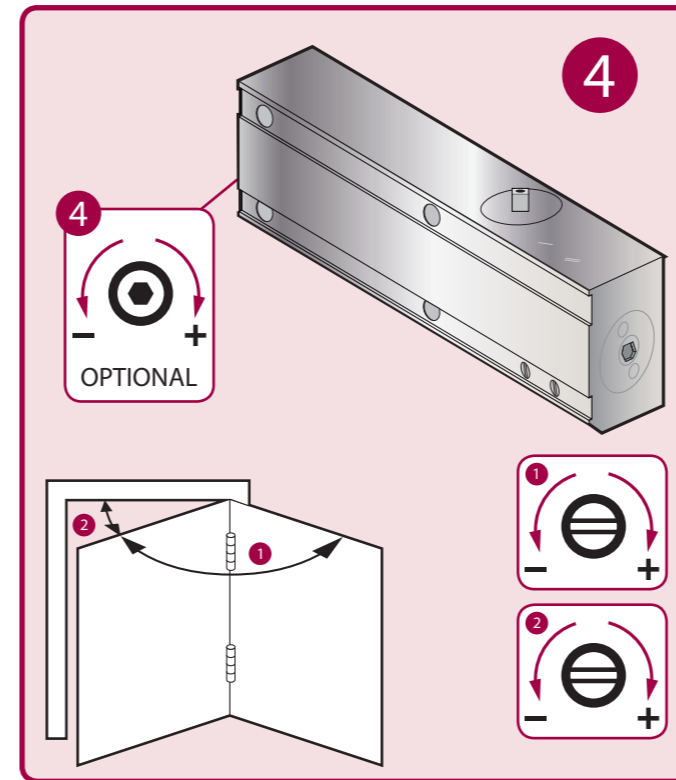
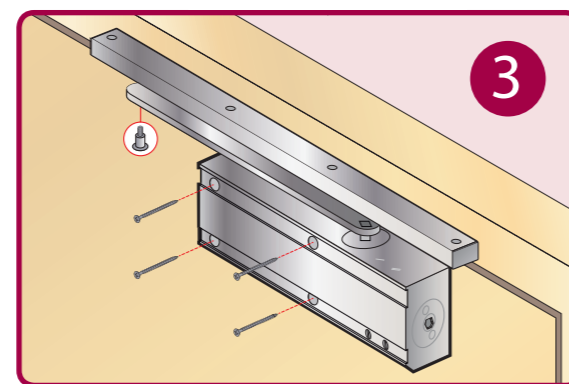
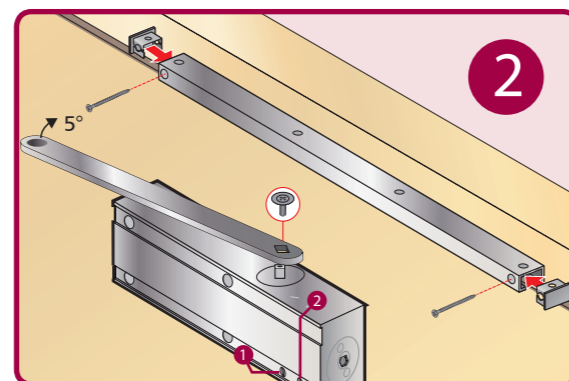
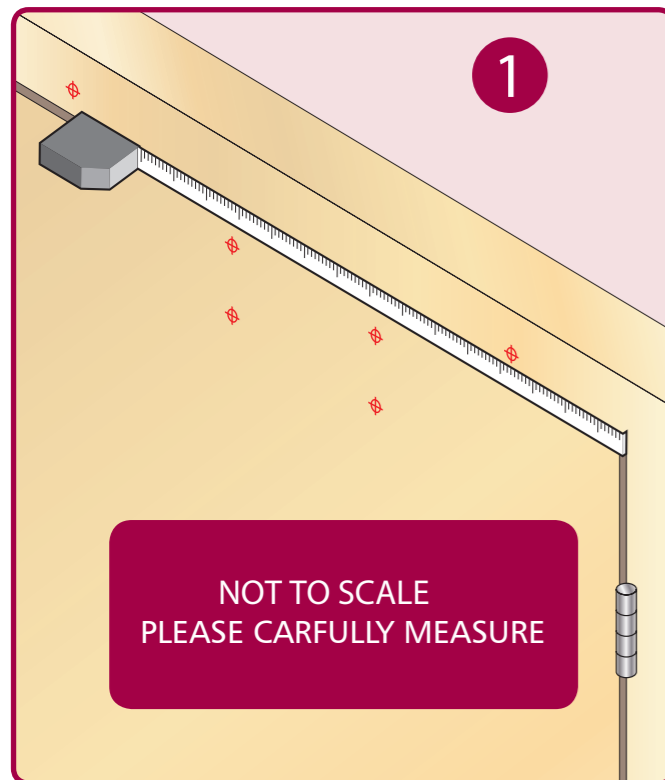
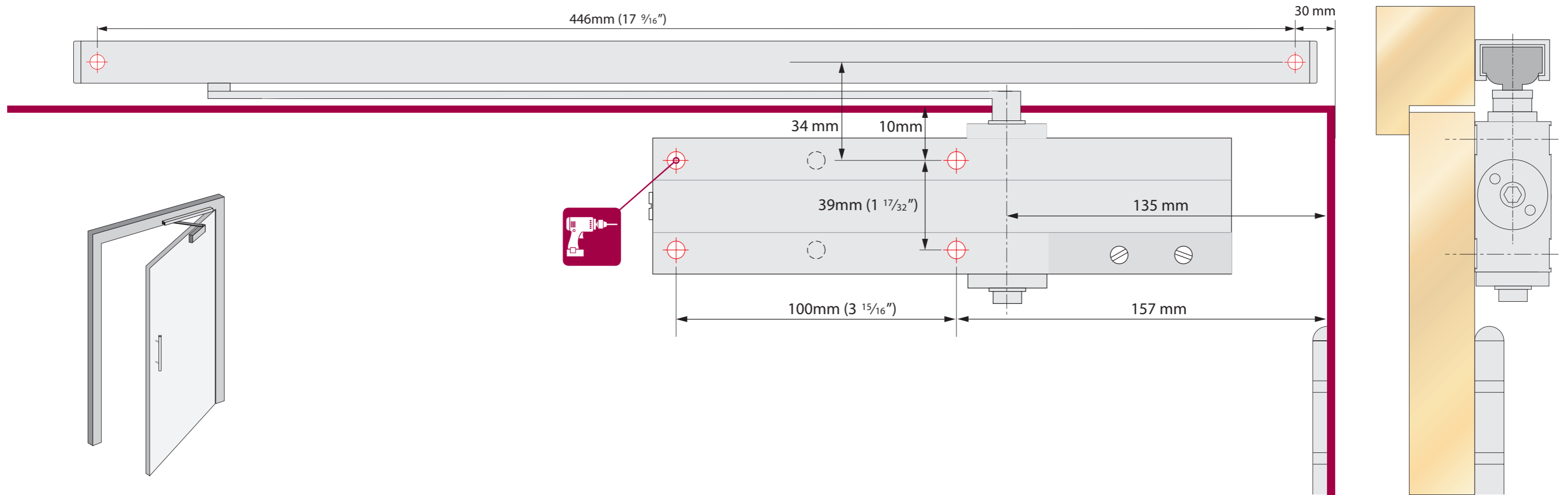


# Pull Side Fitting TS 24



24.3

www.rutlanduk.co.uk



### 2-4 Power Adjustment

| 4            |      |                 |                    |            |
|--------------|------|-----------------|--------------------|------------|
| No. of turns | Size | Max. door width | Max. opening angle | Max weight |
| -4           | 2"   | 850mm           | 180°               | 45         |
| *0           | 3    | 950mm           | 180°               | 60         |
| +6           | 4    | 1100mm          | 180°               | 80         |

\* FACTORY PRE-SET  
 ■ NOT SUITABLE FOR FIRE DOORS

THE PINION BOLT MUST BE TIGHTENED TO 12NM

NO PART OF THIS INSTRUCTION CAN BE COPIED OR STORED IN ANY WAY OR FORM MANUALLY OR ELECTRONICALLY WITHOUT THE FULL PERMISSION OF RUTLAND

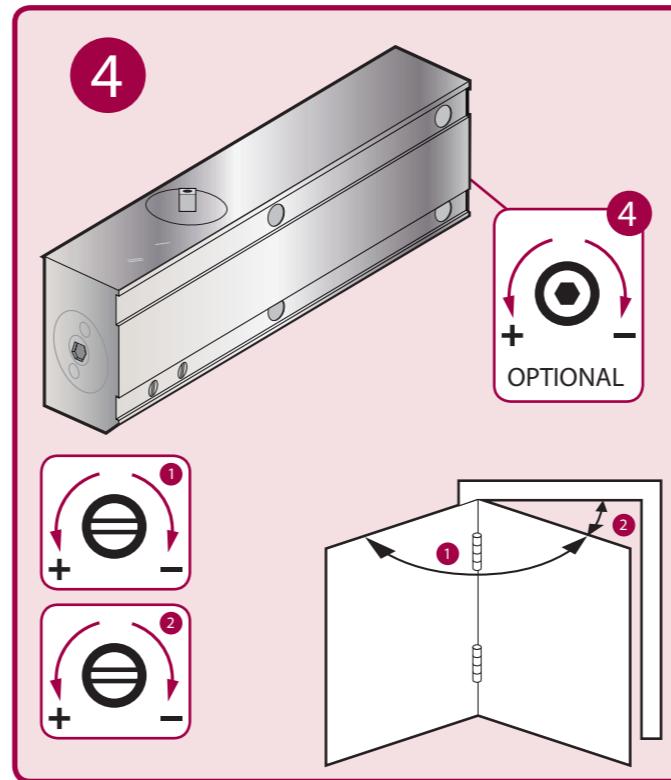
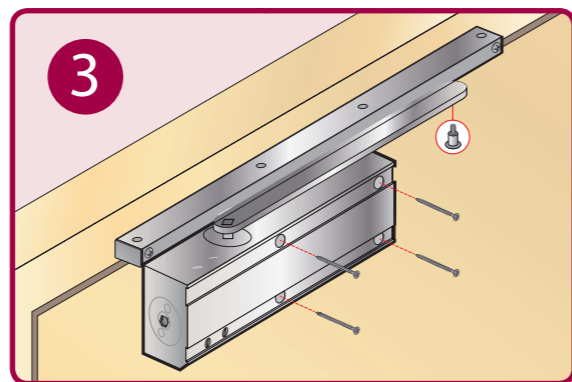
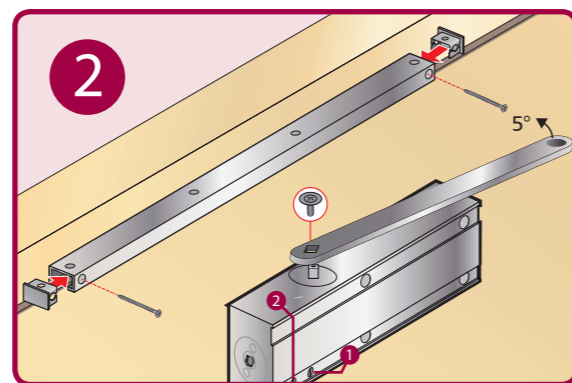
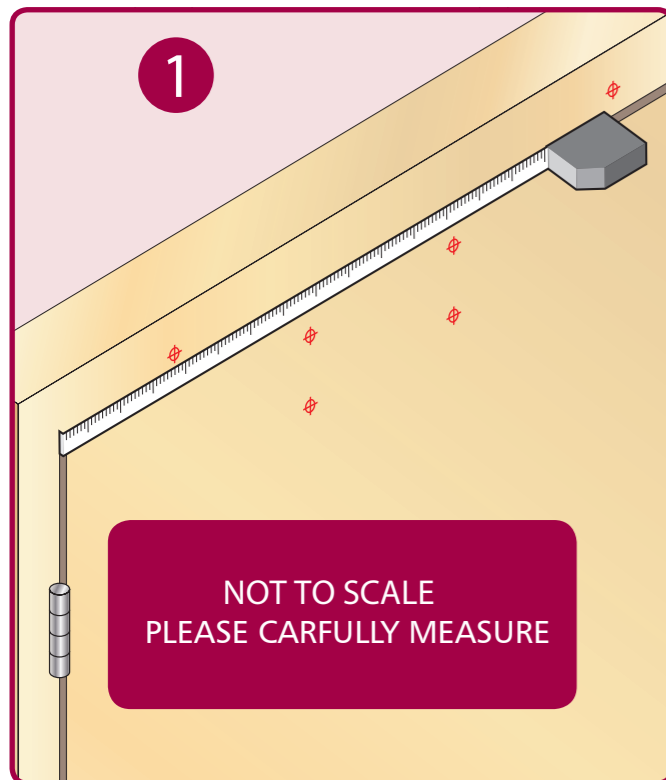
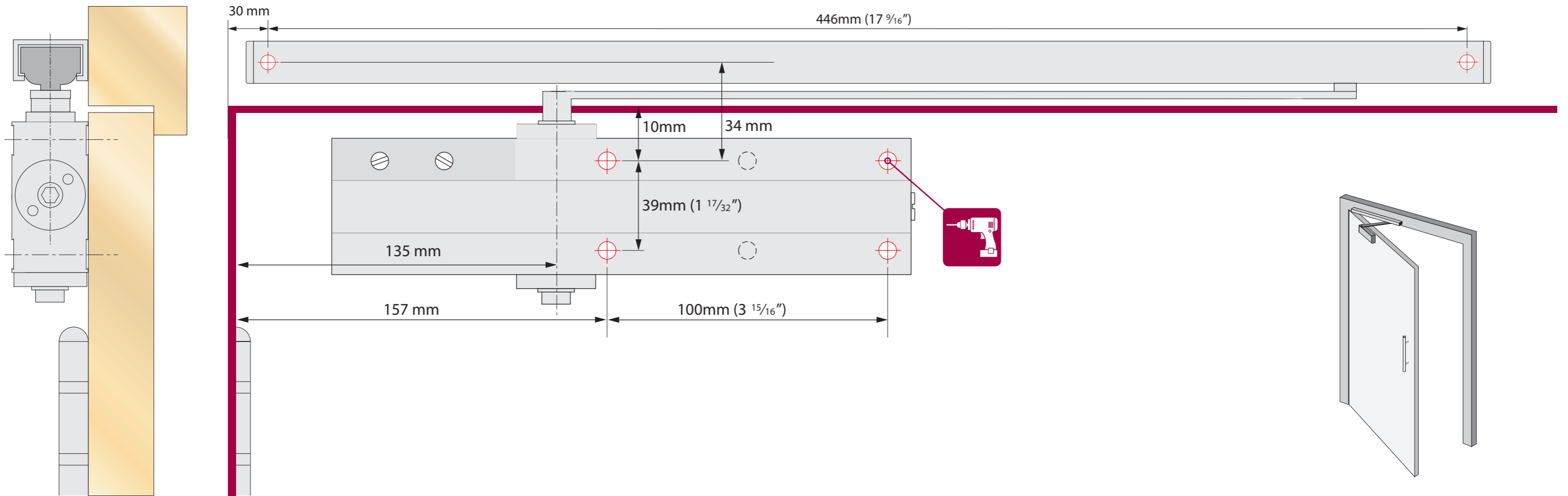


# Pull Side Fitting TS 24



24.3

www.rutlanduk.co.uk



2-4 Power Adjustment

| No. of turns | Size | Max. door width | Max. opening angle | Max weight |
|--------------|------|-----------------|--------------------|------------|
| -4           | 2"   | 850mm           | 180°               | 45         |
| *0           | 3    | 950mm           | 180°               | 60         |
| +6           | 4    | 1100mm          | 180°               | 80         |

\* FACTORY PRE-SET  
 ■ NOT SUITABLE FOR FIRE DOORS

THE PINION BOLT MUST BE TIGHTENED TO 12NM

NO PART OF THIS INSTRUCTION CAN BE COPIED OR STORED IN ANY WAY OR FORM MANUALLY OR ELECTRONICALLY WITHOUT THE FULL PERMISSION OF RUTLAND



# Push-side Transom Mount Fig 61 - TS24

TEL: +44 (0) 1246 261 491 | www.rutlanduk.co.uk



Operations and Maintenance Manual



10 YEARS WARRANTY

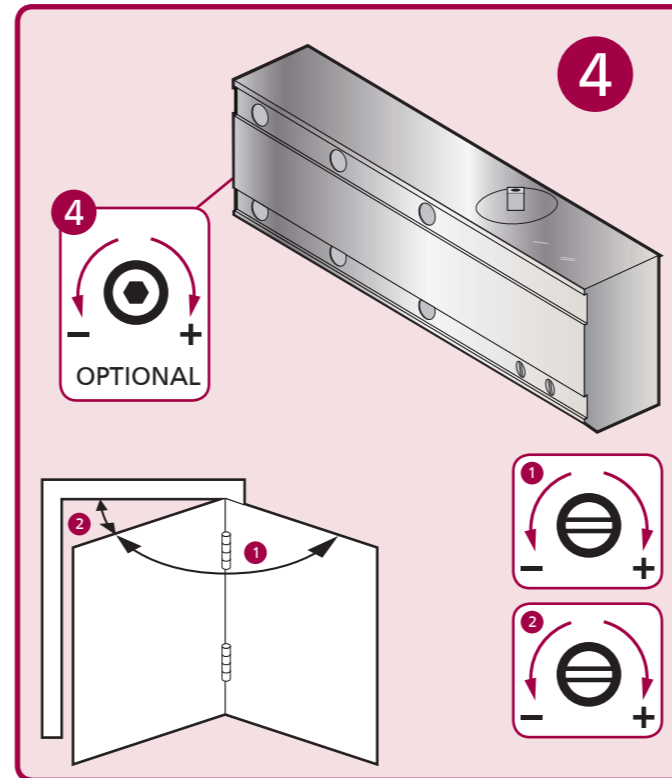
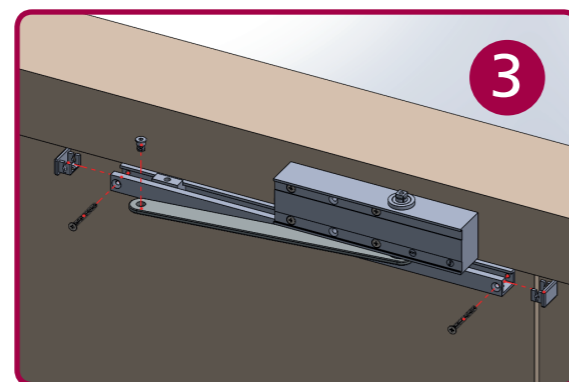
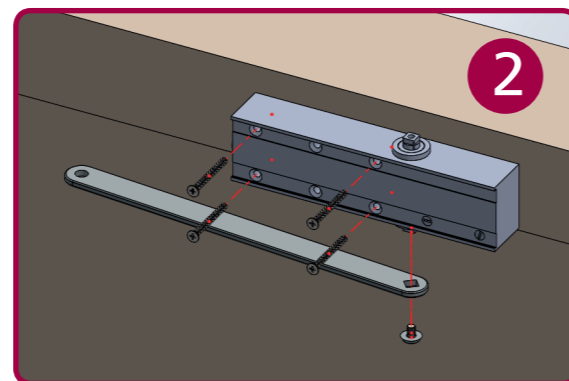
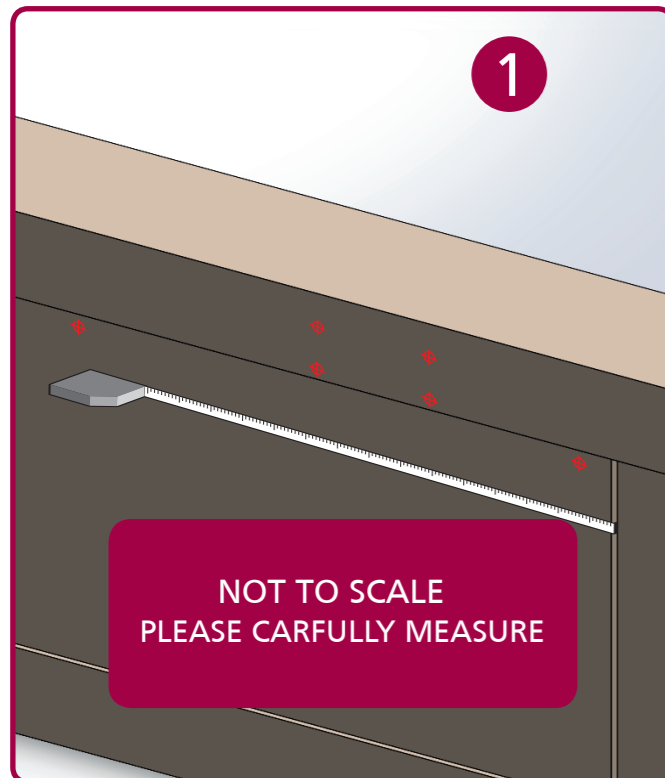
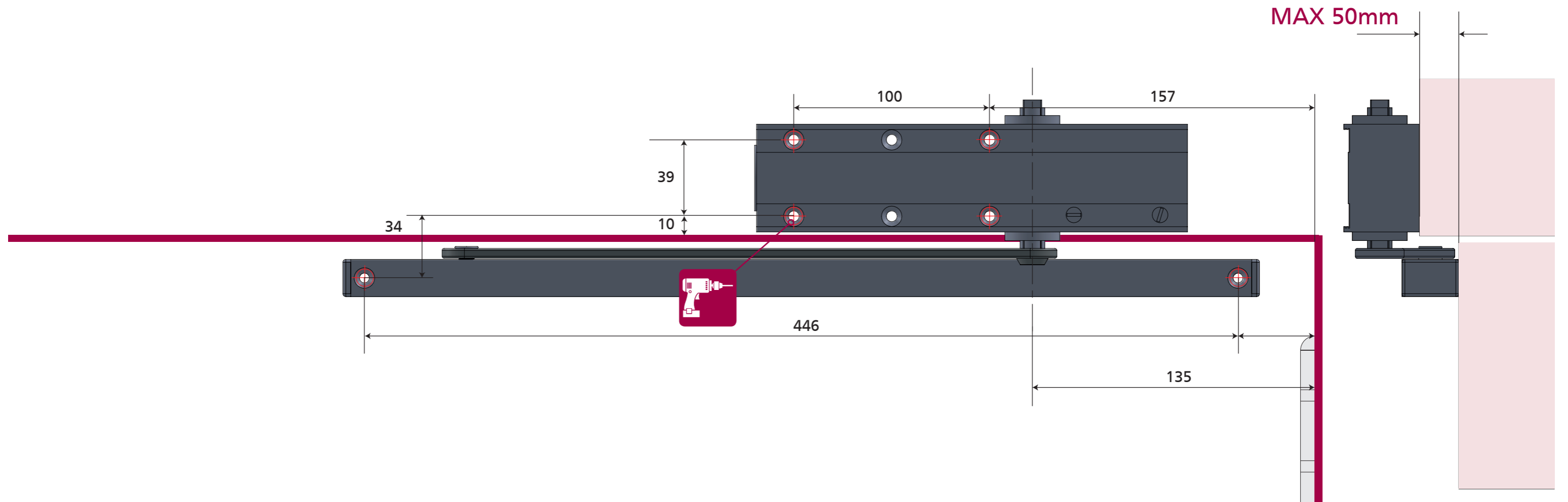


1100mm Max door width



80Kg Max door weight

CE 1812 UK CA 1720  
BS EN 1154  
4 8 2 4 1 1 3



### 2-4 Power Adjustment

| No. of turns | Size | Max. door width | Max. opening angle | Max weight |
|--------------|------|-----------------|--------------------|------------|
| -4           | 2    | 850mm           | 180°               | 45         |
| *0           | 3    | 950mm           | 180°               | 60         |
| +6           | 4    | 1100mm          | 120°               | 80         |

\* FACTORY PRE-SET  
 ■ NOT SUITABLE FOR FIRE DOORS

THE PINION BOLT MUST BE TIGHTENED TO 12NM

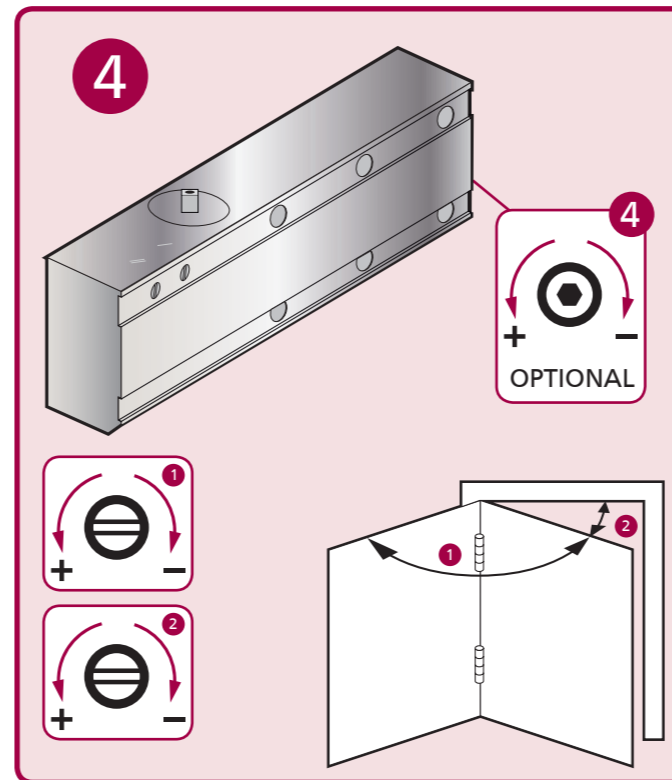
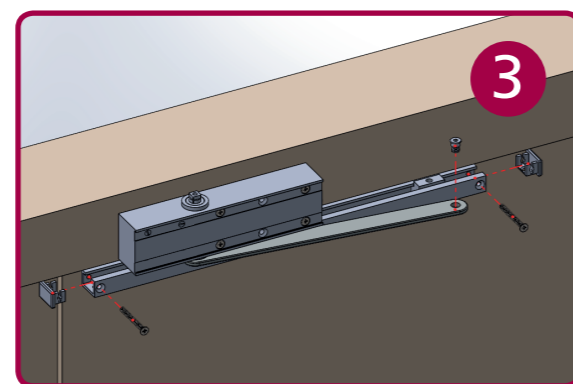
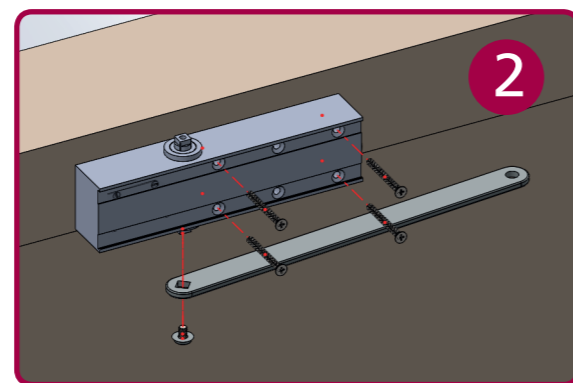
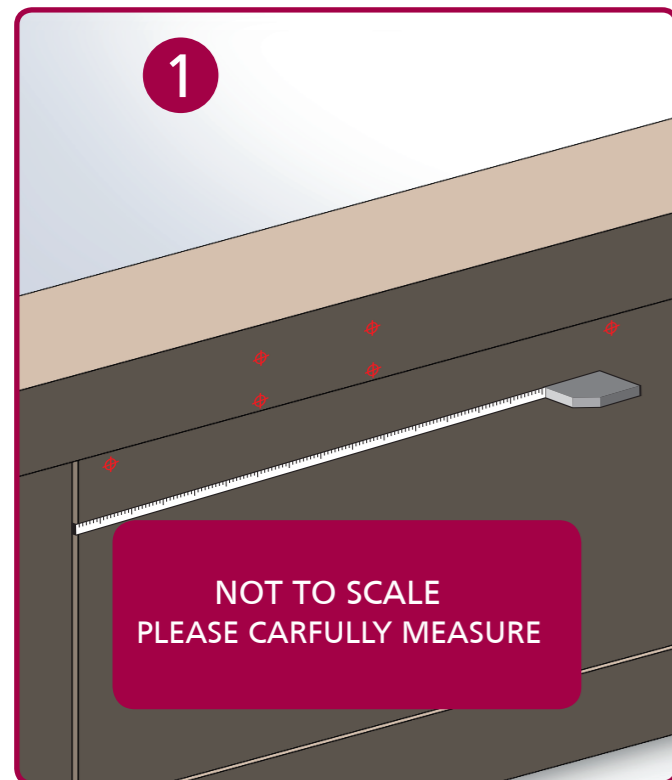
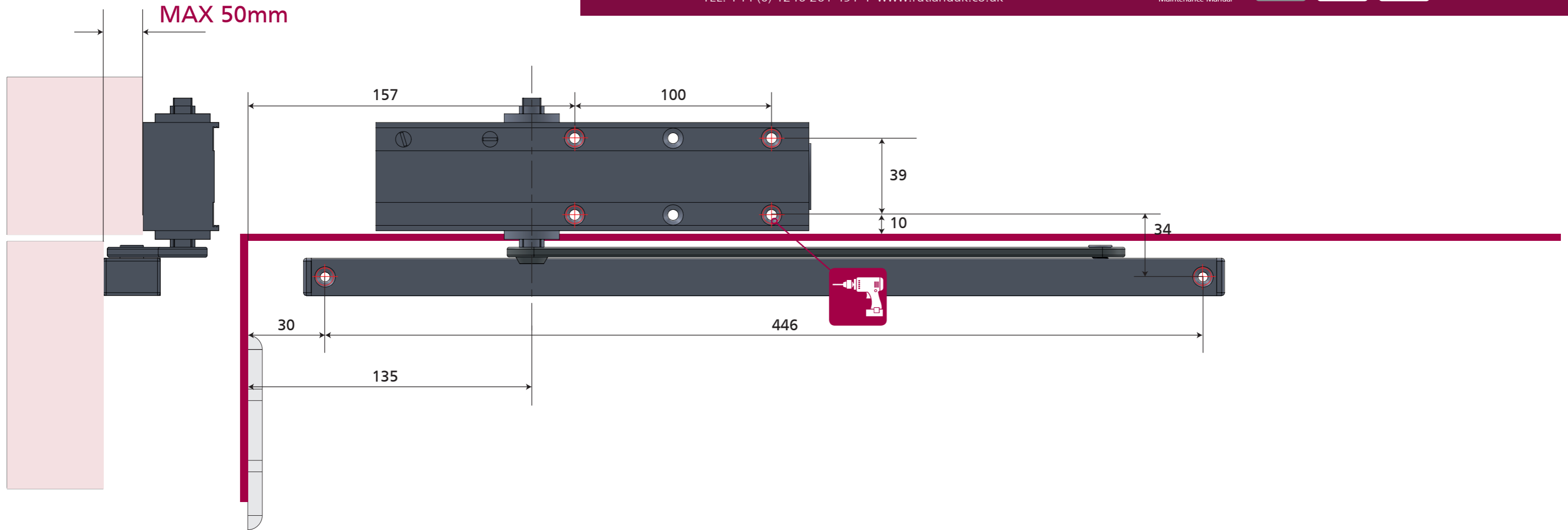
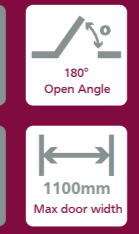
NO PART OF THIS INSTRUCTION CAN BE COPIED OR STORED IN ANY WAY OR FORM MANUALLY OR ELECTRONICALLY WITHOUT THE FULL PERMISSION OF RUTLAND





# Push-side Transom Mount Fig 61 - TS24

TEL: +44 (0) 1246 261 491 | www.rutlanduk.co.uk



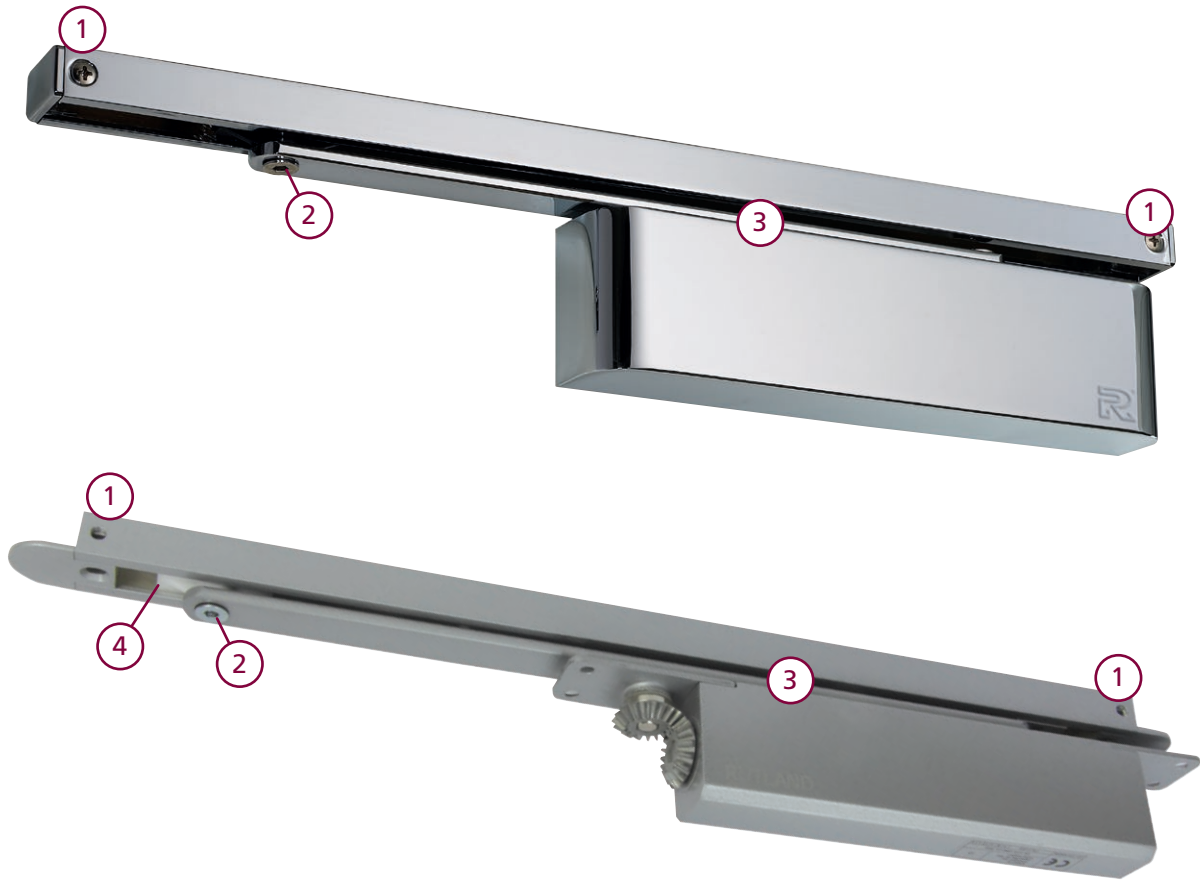
### 2-4 Power Adjustment

| No. of turns | Size | Max. door width | Max. opening angle | Max weight |
|--------------|------|-----------------|--------------------|------------|
| -4           | 2"   | 850mm           | 180°               | 45         |
| *0           | 3    | 950mm           | 180°               | 60         |
| + 6          | 4    | 1100mm          | 120°               | 80         |

\* FACTORY PRE-SET  
■ NOT SUITABLE FOR FIRE DOORS

THE PINION BOLT MUST BE TIGHTENED TO 12NM

NO PART OF THIS INSTRUCTION CAN BE COPIED OR STORED IN ANY WAY OR FORM MANUALLY OR ELECTRONICALLY WITHOUT THE FULL PERMISSION OF RUTLAND



Step 1

Check that screws are tight (No.1 & No.2), and tighten if needed, at least every 6 months.

Step 2

Tighten pinion screw (No. 3) to 12nm, at least every 6 months

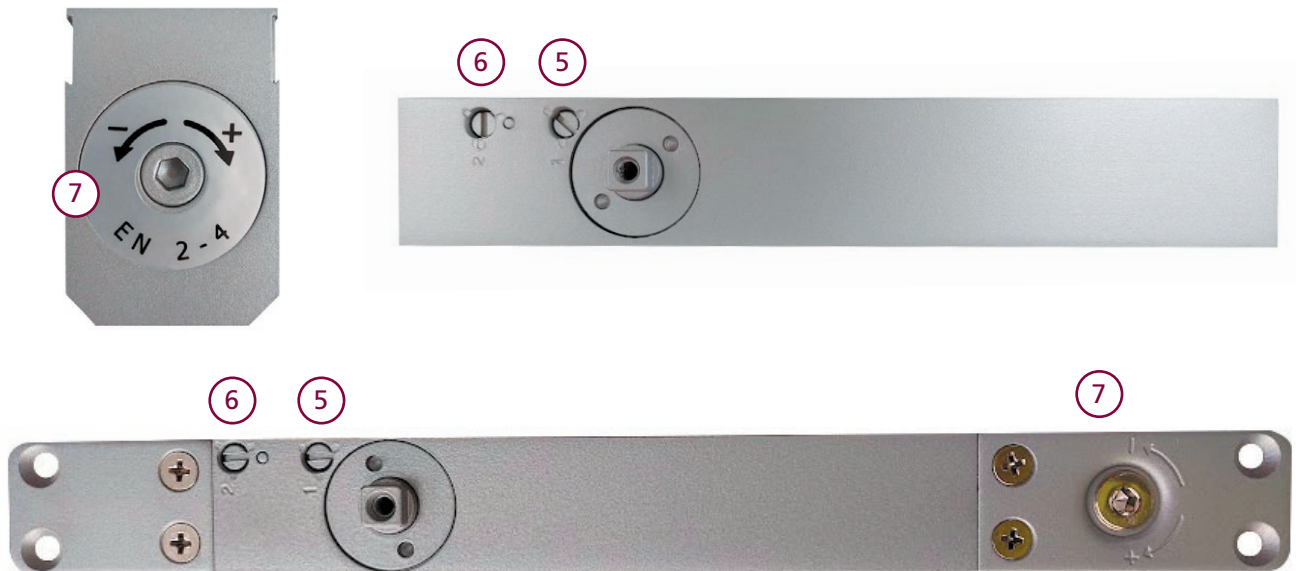
Step 3

Lubricate all moving parts, except the sliding shuttle (No.4) , at least every 6 months.

\*For high usage closers, this steps will need to be carried out more often than every 6 months.

Any unusual sounds or visual defects should be addressed immediately

# Valve Adjustments



Before adjusting any valves ensure the door and frame are fixed firmly and the door will close easily into the frame and latch.

- To increase the speed of a door turn the valve 1 (No.5) Anti-clockwise. If door closing too fast turn the valve 1 Clockwise to reduce the speed to a satisfactory movement.
- When the door is latching too fast adjust the valve 2 (No. 6) to the desired satisfactory action. Turn Clockwise to reduce the speed.
- If the latch is getting stuck, turn Valve 2 anti-clockwise to increase the speed but not too fast so that it slams.
- If more power is needed to overcome the latch or Intumescent seal you can increase the power by turning the power adjustment function (No. 7) with an allen key.
- If the door is too easy to open or affected by wind or air pressure, turn Clockwise to increase the power.
- If the door is stiff to open you can turn Anti-clockwise to decrease the power.

## Back Check + Delayed Action on Slide Arm closers

- If the door hits a wall when fully opened you can adjust the Back Check valve. Turn valve Clockwise with a screw driver to increase the Back Check facility. This will slow the door down on opening at speed. Back Check valve if applicable to this model.
- If a delay or extra time is required on the closing of the door, the Delayed Action valve can be used. Turn the valve clockwise if more time is required or turn the valve anti-clockwise if less time is required. Delayed Action valve if applicable to this model.



SLIDE ARM DOOR CLOSERS

# Back Check and Delayed Action

Rutland Back Check and Delayed Action door closers are the same as other closers, however with extra valves.

## BC Valves

- BC valves are for the restraining of the door on the opening cycle, so it doesn't hit a wall or furniture behind the door.

## DA Valves

- DA door closers are for giving the elderly, the infirm or children a little extra time when walking through the door way. Both valves can be altered to a greater or lesser degree as required.

## Useful Videos

Scan the qr codes to view the latest helpful videos

Door closer valves



6 ways to trouble shoot a Door Closer



# Enhancing life safety at every fire door

Through our expert advice and support, we provide the peace of mind that full compliance is achieved and that life safety is assured.



**Head Office:**

Rutland Trading Co Ltd.  
Unit 4, Holmewood Business Park  
Chesterfield Road, Holmewood  
Chesterfield, S42 5US

**Contact us:**

+44 (0)1246 261491  
[sales@rutlanduk.co.uk](mailto:sales@rutlanduk.co.uk)  
[rutlanduk.co.uk](http://rutlanduk.co.uk)