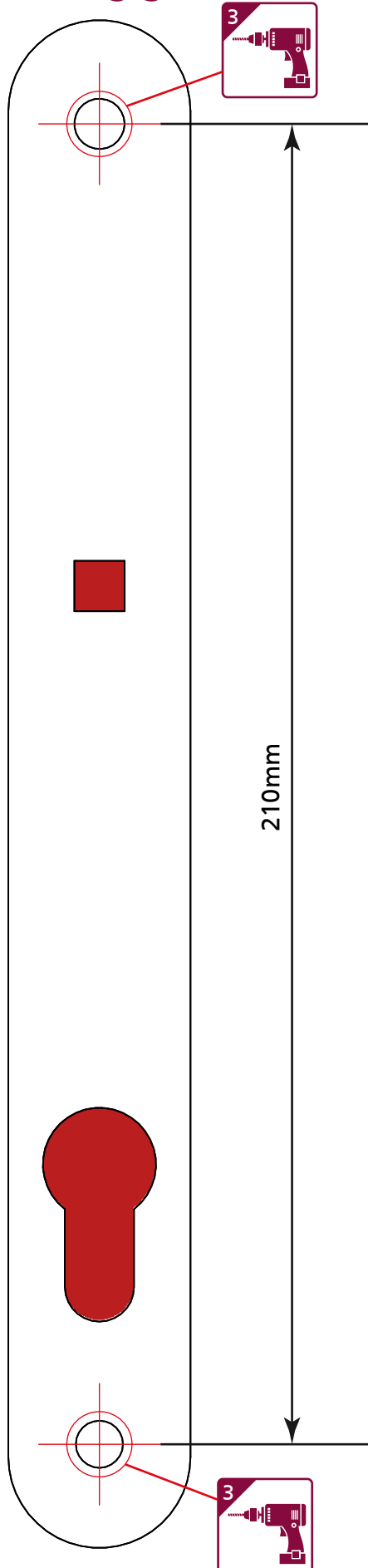


Drilling guide 1:1 SCALE

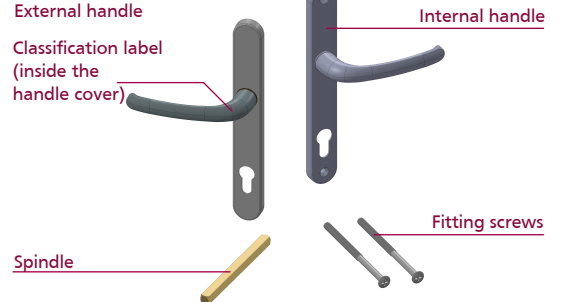


To fit the lever handle, you will require the following tools:

- Adhesive tape
- Tape Measure
- 9mm drill bit
- Screwdriver

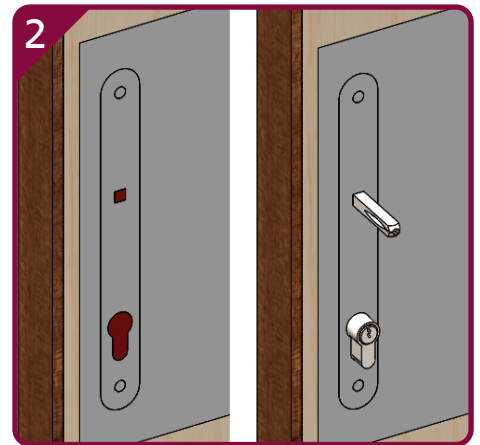
	Rutland UK Holmewood Business Park Chesterfield S42 5US	Door thickness range: 44 - 54mm Manufacturing Date: XX-XXXX
	EN 1906: 2012 Classification	3 7
Residential Lever Handle - RH.RLB		

Component List:

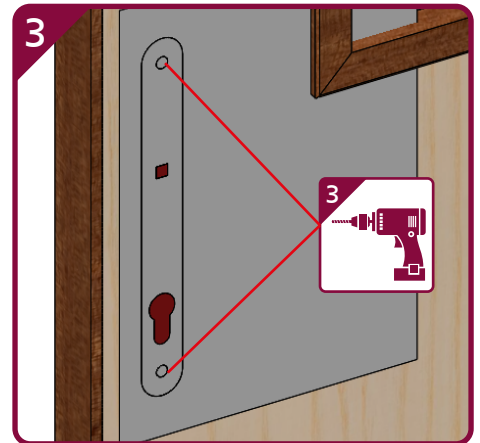


1. Open your door so that you can reach both sides of the handle

2. To confirm the drill position, cut the 1:1 scale drilling guide from fitting instruction and fit with cylinder and lock spindle into the RED area



3. Drill 9mm holes on marked positions and remove the drilling guide



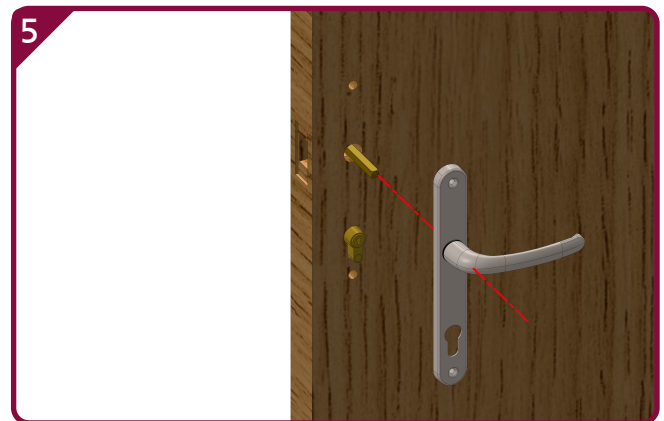
4. Move the external handle to horizontal position and put onto the door and spindle. Make sure the handle fits over the euro profile cylinder and hold the spindle position by the socket screw on handle

**Handle plate should align and stick with the door surface

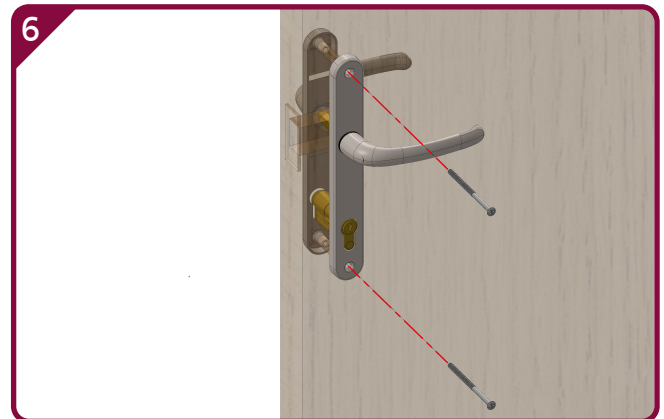


5. Move the internal handle to horizontal position and put onto the door and spindle. Make sure the handle fits on the euro profile cylinder and hold the spindle position by the socket screw on handle

** Handle plate should align and stick with the door surface



6. Locate and screw the fixing screws into the fixing hole positions



Product Code

RH.RLB.PNP
RH.RLB.PB
RH.RLB.SNP
RH.RLB.SE
RH.RLB.WH

Reorder Code

10830
10832
10835
10962
10833

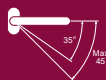
Finishing

Polished Nickel
Polish Brass
Satin Nickel
Silver
White

Additional Information

Maintenance - Use a moist cloth only, as household abrasives or solvents may affect surface finish - lubrication may occasionally be required.
Suitable for 44mm-54mm door thickness

Standard angle of rotation - 35°
Maximum rotation angle - 45°



Technical Information
PAS24:2022
BS EN1906:2012

EN1906 : 2012 Classification

Category of use	3
Durability	7
Door Mass	N/A
Fire Resistance	B
Safety	0
Corrosion Resistance	5
Security	0
Type of operation	A