

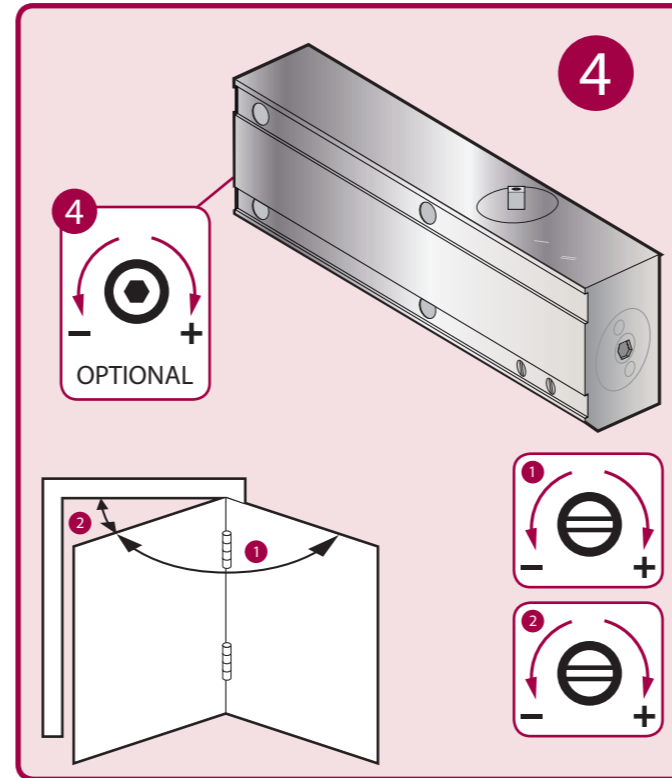
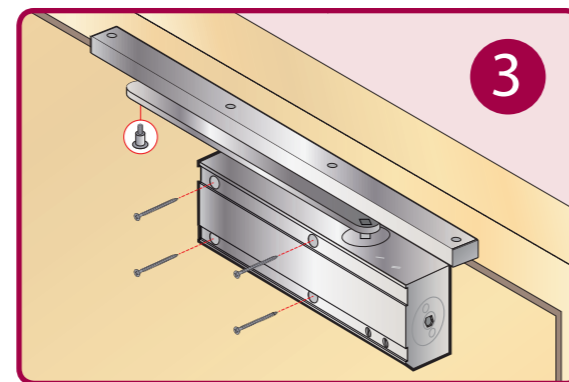
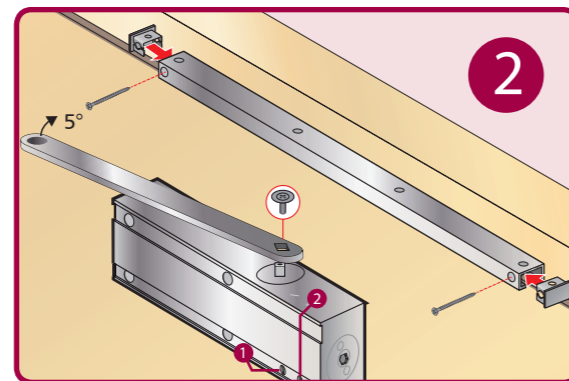
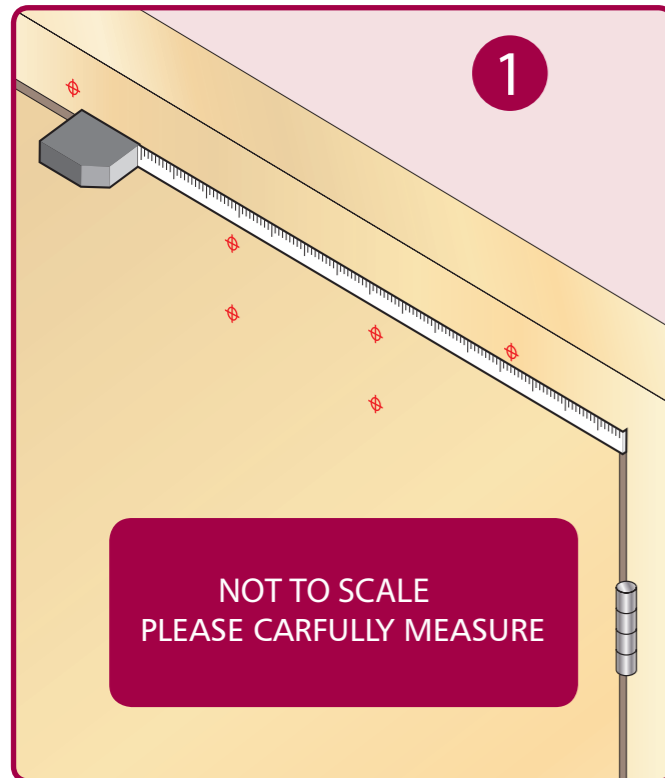
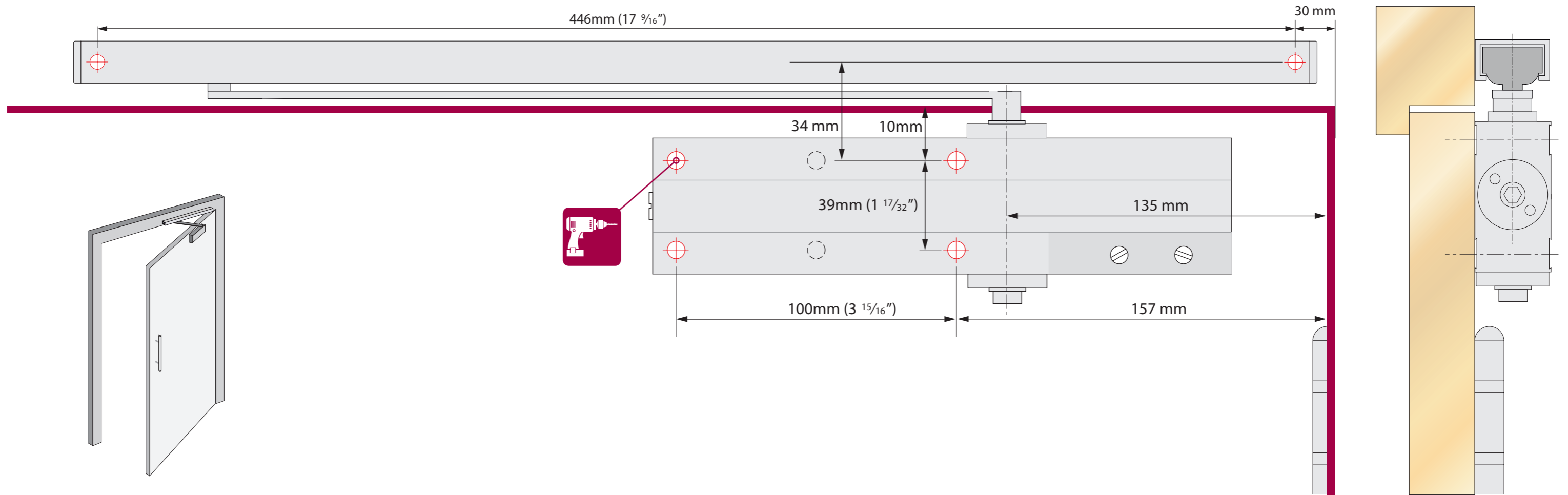


Pull Side Fitting TS 24



24.3

www.rutlanduk.co.uk



2-4 Power Adjustment

4	No. of turns	Size	Max. door width	Max. opening angle	Max weight
-4	-4	2"	850mm	180°	45
*0	*0	3	950mm	180°	60
+6	+6	4	1100mm	180°	80

* FACTORY PRE-SET
 ■ NOT SUITABLE FOR FIRE DOORS

THE PINION BOLT MUST BE TIGHTENED TO 12NM

NO PART OF THIS INSTRUCTION CAN BE COPIED OR STORED IN ANY WAY OR FORM MANUALLY OR ELECTRONICALLY WITHOUT THE FULL PERMISSION OF RUTLAND

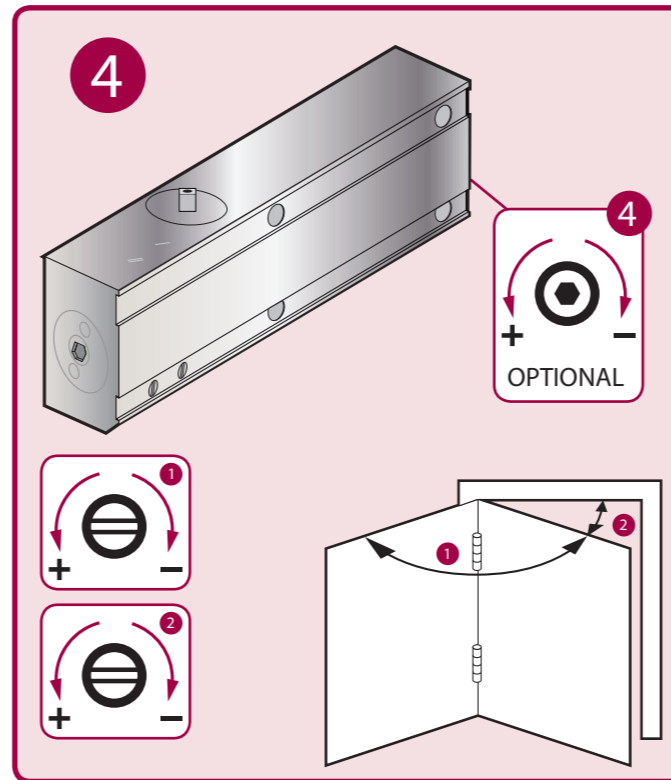
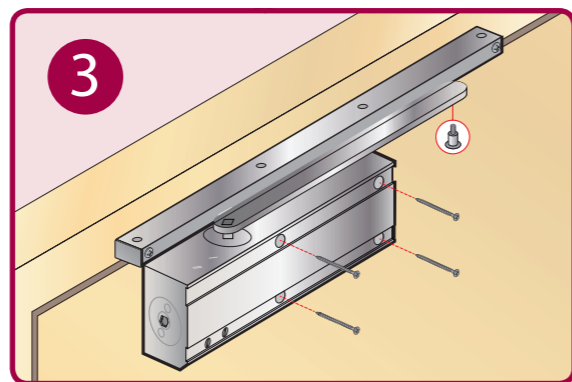
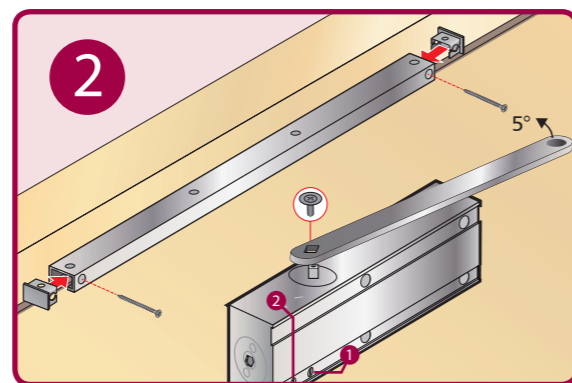
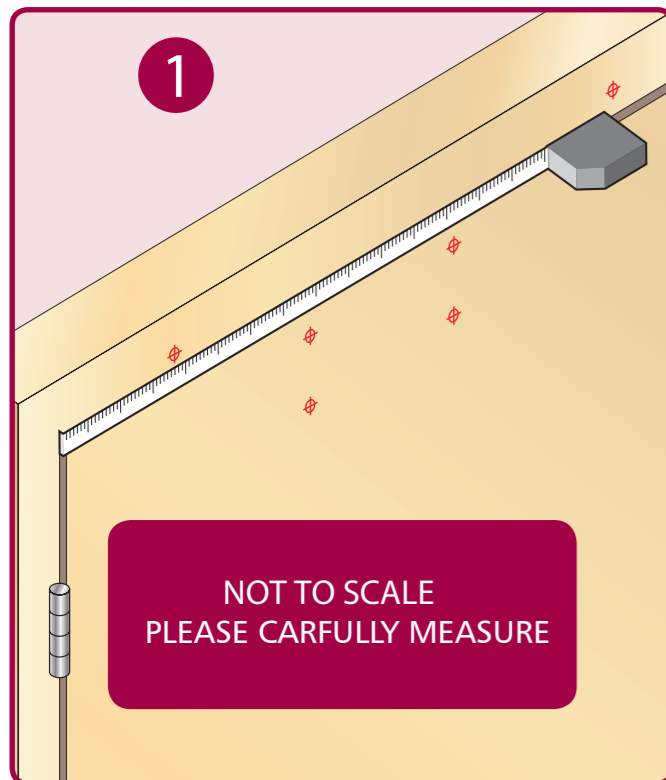
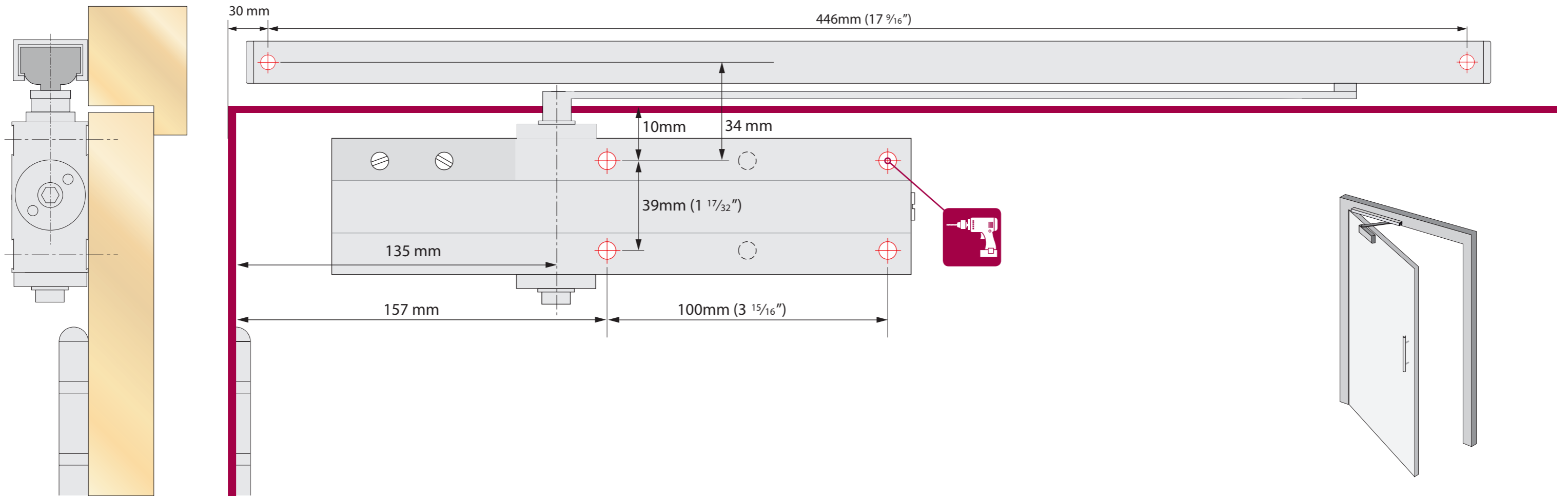


Pull Side Fitting TS 24



24.3

www.rutlanduk.co.uk



2-4 Power Adjustment

No. of turns	Size	Max. door width	Max. opening angle	Max weight
-4	2"	850mm	180°	45
*0	3	950mm	180°	60
+6	4	1100mm	180°	80

* FACTORY PRE-SET
 ■ NOT SUITABLE FOR FIRE DOORS

THE PINION BOLT MUST BE TIGHTENED TO 12NM

NO PART OF THIS INSTRUCTION CAN BE COPIED OR STORED IN ANY WAY OR FORM MANUALLY OR ELECTRONICALLY WITHOUT THE FULL PERMISSION OF RUTLAND