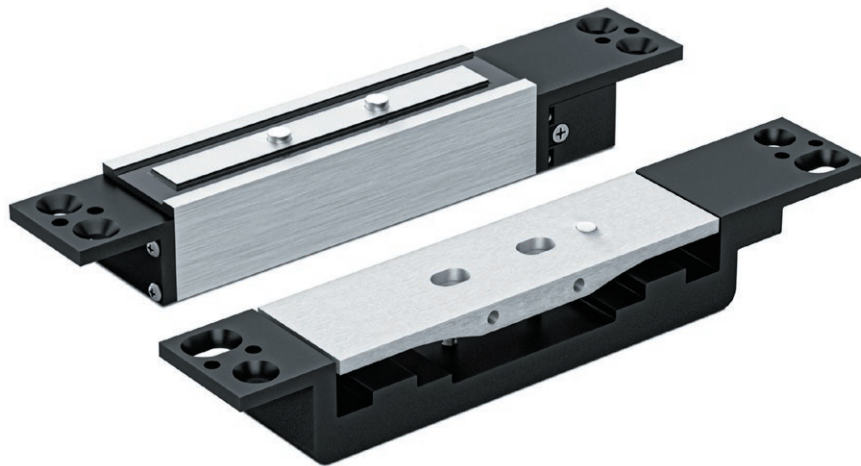


Shear Electro-Magnetic Lock

The REM1200SHEAR Shear Magnetic Lock can be used for single and double action doors and for a small locking device offers a high holding force of 2400 lbf (1200 kgf) (10,675N). Embedded in the header or frame, makes it ideal for a locking device being concealed when the door is closed and secure.

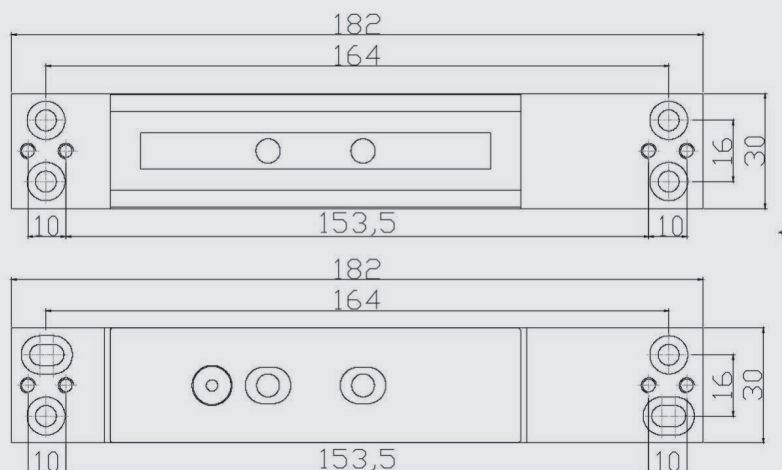
The Shear Magnetic Locks can be fitted on metal or timber doors and is operated by a voltage input of 12V dc. The working current is 220mA

The lock also includes Lock Signal monitoring.



Product Features

| | |
|--|---|
| Supplied with Long and Short Stainless Steel Faceplate for Timber and Metal Frames | ✓ |
| Working current is 220mA | ✓ |
| Voltage input of 12V dc | ✓ |
| High holding force of 2400 lbf (1200 kgf) (10,675N) | ✓ |
| Lock Signal monitoring | ✓ |



All dimensions shown are in mm