



Security Door Chain

Fitting Instruction

TEL: +44 (0) 1246 261 491 | www.rutlanduk.co.uk



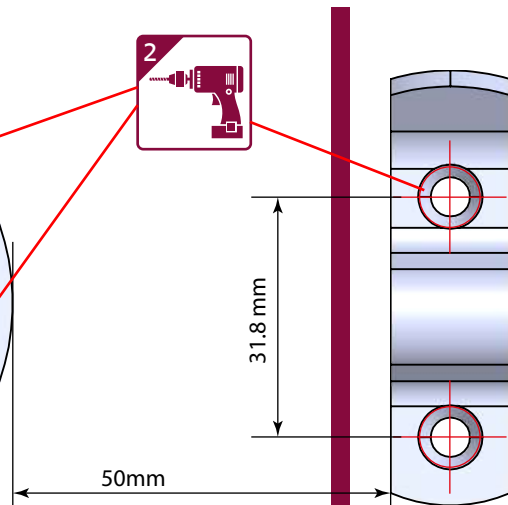
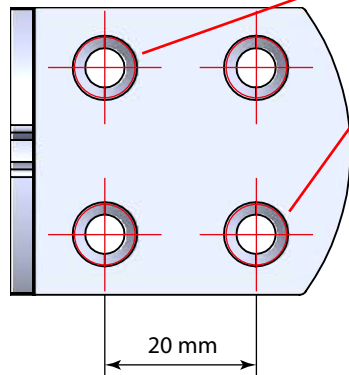
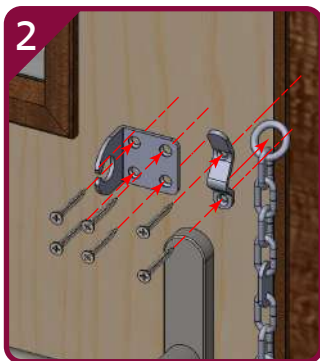
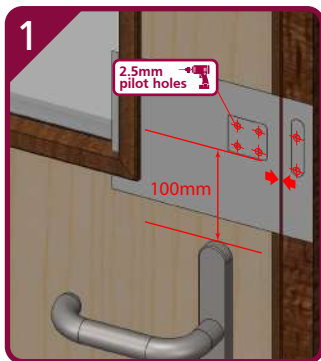
Secured by Design



PRINT TO A5 PAPER SIZE IN 1:1 SCALE

COPYRIGHT 2025 ©

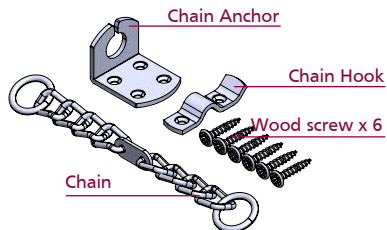
Last revision: Sep 2025



To fit the Door Chain, you will require the following tools:

- Adhesive tape
- Tape Measure
- 2.5mm drill bit
- Screwdriver

Component List:





Security Door Chain

Fitting Instruction

TEL: +44 (0) 1246 261 491 | www.rutlanduk.co.uk



Secured by Design

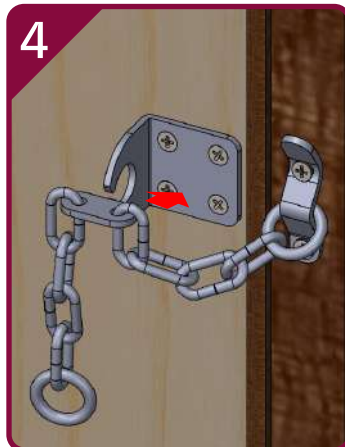


Police Preferred Specification

PRINT TO A5 PAPER SIZE IN 1:1 SCALE

COPYRIGHT 2025 ©

Last revision: Sep 2025



Additional Information

Operation - Slide flat plate of chain into slot in chain anchor (Pic 4 & Pic 5). When chain is not in used place the end ring on the chain hook (Pic 6)

Security Tips - Always engage chain and ask for identification before opening the door to strangers.

Safety Tips - For additional safety we recommend the use of a Rutland Door Viewer

Maintenance - Use a moist cloth only, as household abrasives or solvents may affect surface finish - lubrication may occasionally be required.

Technical Information

TS003:2012

PAS24:2022

Product Code	Reorder Code	Finishing
RH.SC.PNP	10821	Polished Nickel
RH.SC.SNP	10848	Satin Nickel
RH.SC.PB	10849	Polish Brass