



# Push Side Fitting Instruction

## TS11204

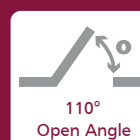
TEL: +44 (0) 1246 261 491 | [www.rutlanduk.co.uk](http://www.rutlanduk.co.uk)



Operations and  
Maintenance Manual



35  
YEARS  
WARRANTY



1100mm  
Max door width



80Kg  
Max door weight



BS EN 1154  
3 8 2 1 1 3



1812 1720

PRINT TO A2 PAPER SIZE FOR 1:1 SCALE

FOLD 1

FOLD 2

Bottom of Stop

Edge of  
Door Leaf

1 - Closing Speed  
2 - Latching Speed

EN 2 - 4 Power Size



No of turns

-1.5



EN Size

2<sup>A</sup>



Max door width

850mm



110°



Max weight

45

0\*

3

950mm

110°

60

+3

4

1100mm

110°

80

\*FACTORY PRE-SET  
A - EN2 NOT SUITABLE FOR FIRE DOOR

IMPORTANT NOTES:  
THE PINION BOLT MUST BE TIGHTENED TO 12Nm.

A MECHANICAL DOOR CLOSER IS NOT DESIGNED TO OVERCOME POOR FITTING, EXCESSIVE AIR PRESSURES OR BINDING SMOKE AND WEATHER SEALS. EXCESSIVE AIR PRESSURES CAN BE CREATED BY THROUGH DRAFT, BY AIR CONDITIONING, BY SMALL ROOMS WITHOUT VENTILATION, OR WHERE NO AIR TRANSFERS GRILLS ARE FITTED. MECHANICAL DOOR CLOSERS ARE DESIGNED TO CLOSE THE STATED AND TESTED SPECIFICATION OF DOOR WEIGHT AND DOORSETS/DOOR ASSEMBLIES WHEN DOORS ARE FITTED WITH CORRECT GAPS AND NOT BINDING ON SEALS. IF YOU ENCOUNTER PROBLEMS WITH DOORS NOT CLOSING PLEASE WATCH OUR "6 WAYS TO TROUBLESHOOT A DOOR CLOSER" VIDEO ONLINE. WHERE DOORS ARE NOT CLOSING DUE TO AIR PRESSURES THEN PROFESSIONAL ADVICE FROM AN AUTHORISED INSTALLER IS RECOMMENDED TO FIT TESTED AND THIRD PARTY CERTIFIED AIR TRANSFER GRILLS AND/OR AUTOMATIC DOOR OPERATORS.  
NOTE: BC VALVES ARE DESIGNED TO ASSIST BACK-CHECK AND DO NOT REPLACE THE REQUIREMENT FOR CORRECTLY FITTED DOORSTOPS OR SAFETY BARRIERS.

FURTHER WARRANTY INFORMATION: <https://www.rutlanduk.co.uk/rutland-warranty>



# Push Side Fitting Instruction

## TS11204

TEL: +44 (0) 1246 261 491 | [www.rutlanduk.co.uk](http://www.rutlanduk.co.uk)



Operations and  
Maintenance Manual

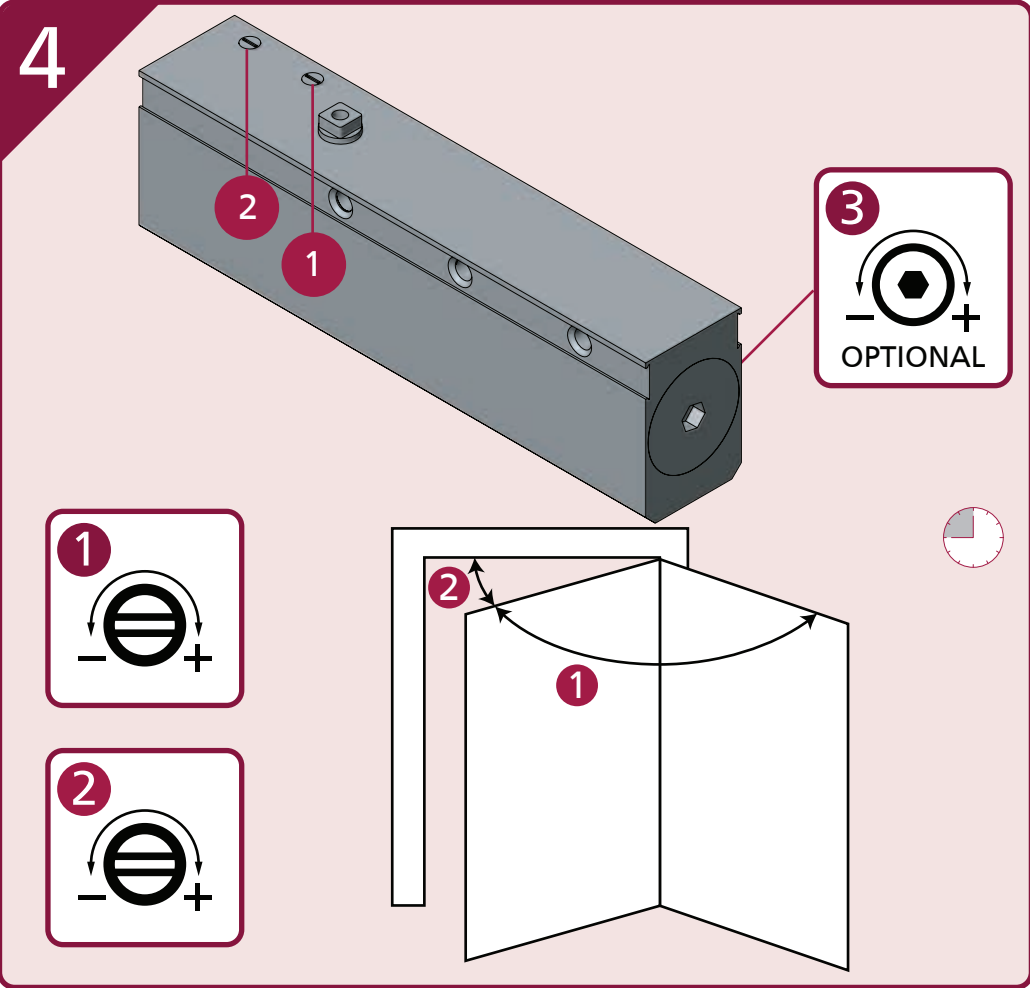
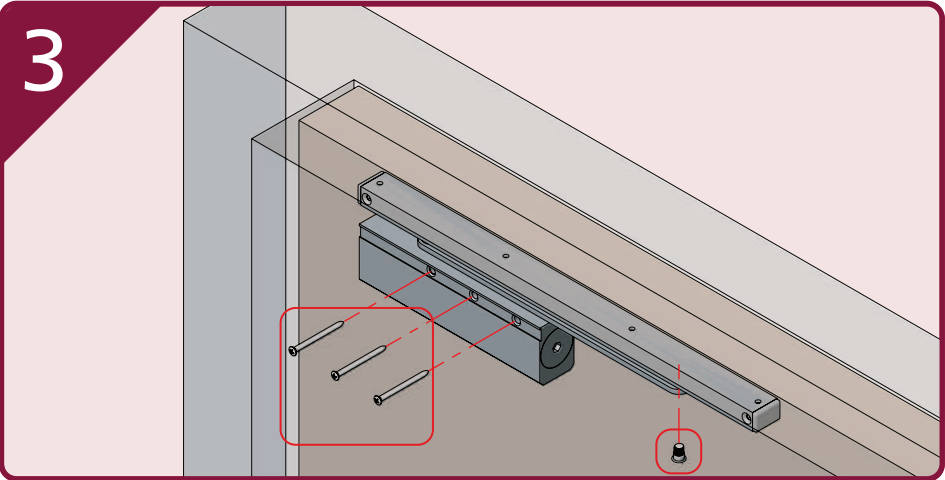
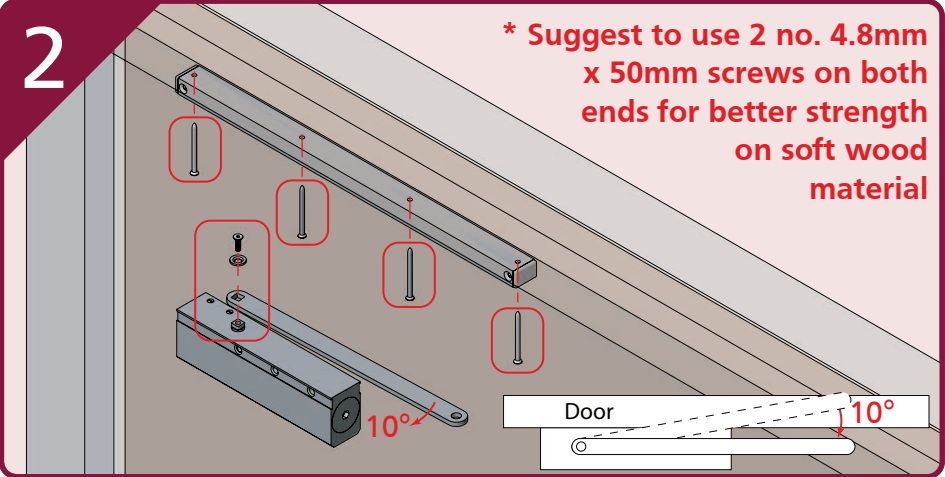
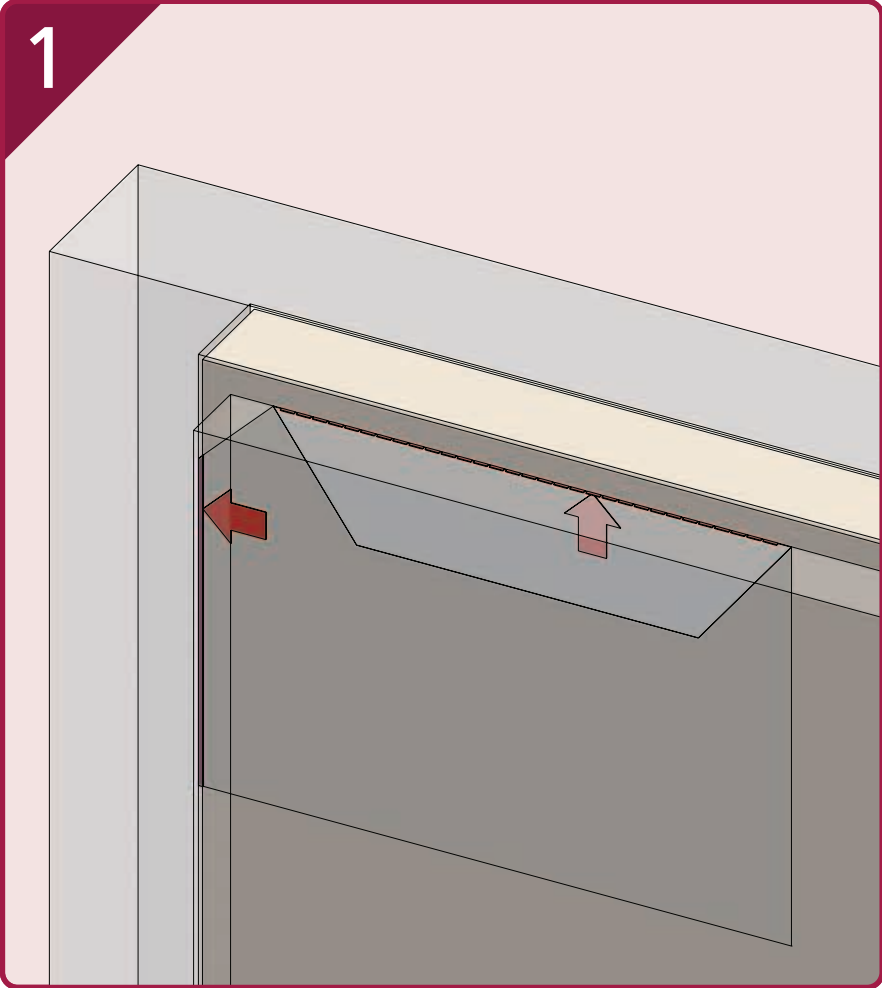
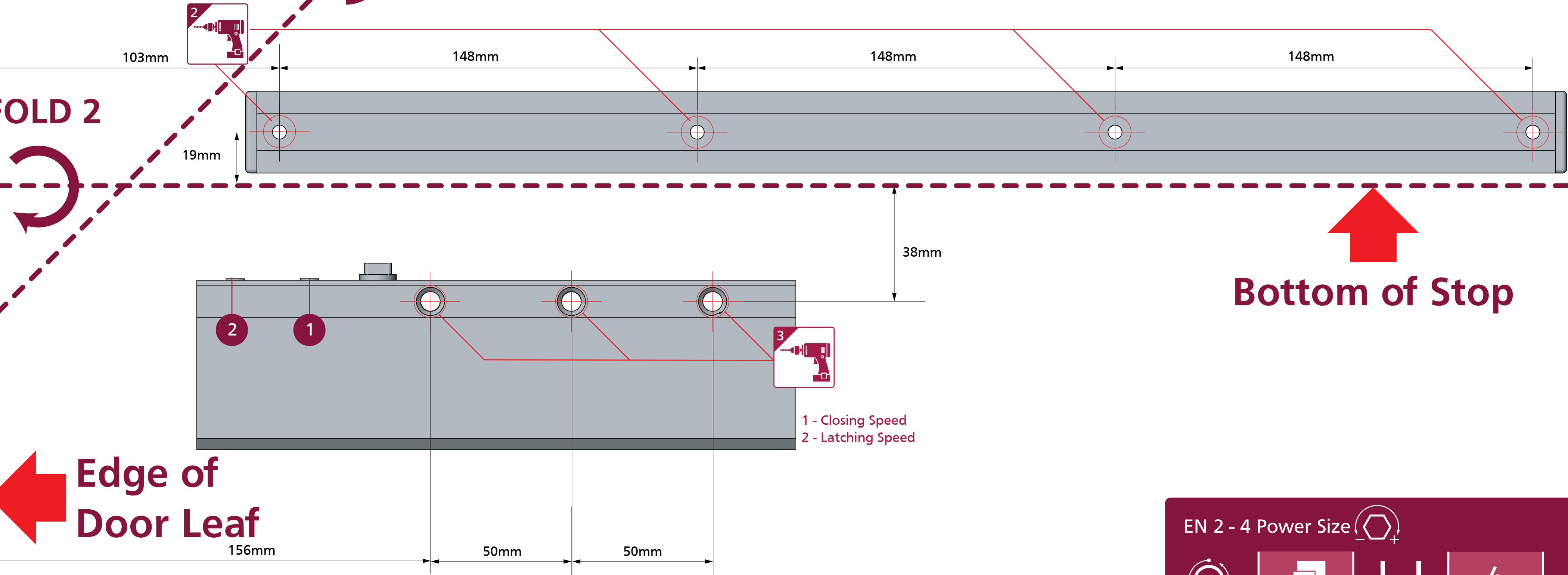


BS EN 1154

3 8 2 1 1 3

FOLD 1

FOLD 2



### EN 2 - 4 Power Size

No of turns	EN Size	Max door width	110°	Max weight
-1.5	2 <sup>A</sup>	850mm	110°	45
0*	3	950mm	110°	60
+3	4	1100mm	110°	80

\*FACTORY PRE-SET  
A - EN2 NOT SUITABLE FOR FIRE DOOR

IMPORTANT NOTES:  
THE PINION BOLT MUST BE TIGHTENED TO 12Nm.

A MECHANICAL DOOR CLOSER IS NOT DESIGNED TO OVERCOME POOR FITTING, EXCESSIVE AIR PRESSURES OR BINDING SMOKE AND WEATHER SEALS. EXCESSIVE AIR PRESSURES CAN BE CREATED BY THROUGH DRAFT, BY AIR CONDITIONING, BY SMALL ROOMS WITHOUT VENTILATION, OR WHERE NO AIR TRANSFERS GRILLS ARE FITTED. MECHANICAL DOOR CLOSERS ARE DESIGNED TO CLOSE THE STATED AND TESTED SPECIFICATION OF DOOR WEIGHT AND DOORSETS/DOOR ASSEMBLIES WHEN DOORS ARE FITTED WITH CORRECT GAPS AND NOT BINDING ON SEALS. IF YOU ENCOUNTER PROBLEMS WITH DOORS NOT CLOSING PLEASE WATCH OUR "6 WAYS TO TROUBLESHOOT A DOOR CLOSER" VIDEO ONLINE. WHERE DOORS ARE NOT CLOSING DUE TO AIR PRESSURES THEN PROFESSIONAL ADVICE FROM AN AUTHORISED INSTALLER IS RECOMMENDED TO FIT TESTED AND THIRD PARTY CERTIFIED AIR TRANSFER GRILLS AND/OR AUTOMATIC DOOR OPERATORS.

NOTE: BC VALVES ARE DESIGNED TO ASSIST BACK-CHECK AND DO NOT REPLACE THE REQUIREMENT FOR CORRECTLY FITTED DOORSTOPS OR SAFETY BARRIERS.

FURTHER WARRANTY INFORMATION: <https://www.rutlanduk.co.uk/rutland-warranty>